

Nur für Forschungszwecke

Glucagon Monoklonaler Antikörper

Katalog-Nr.:CL488-67286

1 Publikationen



Allgemeine Informationen

Katalog-Nr.: CL488-67286	GenBank-Zugangsnummer: BC005278	Reinigungsmethode: Protein-G-Reinigung
Größe: 100ul , Konzentration: 1000 µg/ml von2641 Nanodrop;	GeneID (NCBI): 2A8G1	CloneNo.: 2A8G1
Wirt: Maus	Vollständiger Name: glucagon	Empfohlene Verdünnungen: IF 1:200-1:800
Isotyp: IgG1	Berechnete Masse: 180 aa, 21 kDa	Anregungs-/Emissionsmaxima- Wellenlängen: 493 nm / 522 nm
Immunogen Katalognummer: AG10629		

Anwendungen

Geprüfte Anwendungen: IF	Positivkontrollen: IF : Maus-Pankreasgewebe,
In Publikationen genannte Anwendungen: IF	
Getestete Reaktivität: Human, Maus	
Zitierte Arten: Maus	

Hintergrundinformationen

Glucagon is a 29-amino acid peptide hormone secreted from the pancreatic alpha cells with a powerful stimulatory effect on hepatic glucose production acting to increase plasma glucose levels. Glucagon is best known as the counter-regulatory hormone to INS, and normal glucose homeostasis depends largely on the balanced secretion of INS and glucagon from the pancreatic beta and alpha cells, respectively. The regulation of glucose metabolism by glucagon is mediated by its direct action on the peripheral tissues such as the liver and also by the brain. Glucagon is also released postprandially in a transient manner, which was shown to be involved in inhibition of food intake via reduction of meal size.

Bemerkenswerte Veröffentlichungen

Verfasser	Pubmed ID	Journal	Anwendung
Althea N Walldhart	37168572	iScience	IF

Lagerung

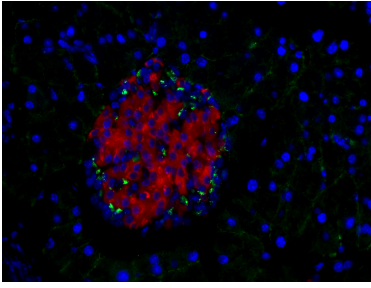
Lagerungsbedingungen:
Bei -20°C lagern. Vor Licht schützen.
Lagerungspuffer:
BS mit 50% Glycerin, 0,05% Proclin300, 0,5% BSA, pH 7,3.
Aliquotieren ist nicht notwendig bei -20°C Lagerung

*** 20ul-Größen enthalten 0.1% BSA

For technical support and original validation data for this product please contact:
T: 1 (888) 4PTGLAB (1-888-478-4522) (toll free in USA), or 1(312) 455-8498 (outside USA)
E: proteintech@ptglab.com
W: ptglab.com

This product is exclusively available under Proteintech Group brand and is not available to purchase from any other manufacturer.

Ausgewählte Validierungsdaten



Immunofluorescent analysis of (4% PFA) fixed mouse pancreas tissue using the CoraLite® Plus 488-conjugated version of this antibody, CL488-67286 (Glucagon antibody) and CL594-66198 (INS antibody), at dilution of 1:400. The B cells of the islets of Langerhans was labelled in red with CL594-66198(INS antibody).