

Nur für Forschungszwecke

Collagen Type I Monoklonaler Antikörper

Katalog-Nr.:CL488-67288



Allgemeine Informationen

Katalog-Nr.: CL488-67288	GenBank-Zugangsnummer: NM_000088	Reinigungsmethode: Protein-G-Reinigung
Größe: 100ul , Konzentration: 1000 µg/ml von1277 Nanodrop;	GeneID (NCBI): 1277	CloneNo.: 1E9A7
Wirt: Maus	Vollständiger Name: collagen, type I, alpha 1	Empfohlene Verdünnungen: IF 1:50-1:500
Isotyp: IgG1	Berechnete Masse: 139 kDa	Anregungs-/Emissionsmaxima-Wellenlängen: 488 nm / 515 nm
	Beobachtete Masse: 120-130 kDa	

Anwendungen

Geprüfte Anwendungen:

IF

Getestete Reaktivität:

Hausschwein, Human

Positivkontrollen:

IF : humanes Kolonkarzinomgewebe,

Hintergrundinformationen

Type I collagen, the major structural component of connective tissues such as skin, tendon and bone, is the most abundant and widely expressed collagen in humans (PMID: 7620364; 8645190; 9016532). Type I collagen is a heterotrimer comprising one alpha 2(I) and two alpha 1(I) chains which are encoded by the unlinked loci COL1A2 and COL1A1 respectively. Mutations in COL1A1 are associated with osteogenesis imperfecta types I-IV, Ehlers-Danlos syndrome type VIIA, Ehlers-Danlos syndrome Classical type, Caffey Disease and idiopathic osteoporosis. This antibody raised against a synthesized peptide corresponding to 1206-1218 aa of human pro-alpha 1 chain of type I collagen recognize collagen alpha-1(I) chain.

Lagerung

Lagerungsbedingungen:

Bei -20°C lagern. Vor Licht schützen.

Lagerungspuffer:

BS mit 50% Glycerin, 0,05% Proclin300, 0,5% BSA, pH 7,3.

Aliquotieren ist nicht notwendig bei -20°C Lagerung

***** 20ul-Größen enthalten 0.1% BSA**

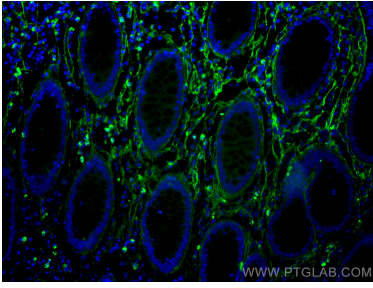
For technical support and original validation data for this product please contact:

T: 1 (888) 4PTGLAB (1-888-478-4522) (toll free in USA), or 1(312) 455-8498 (outside USA)

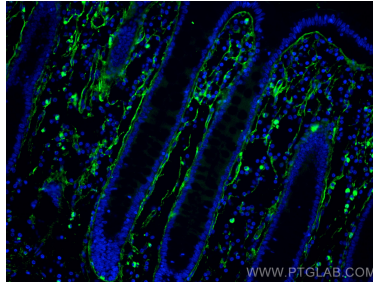
E: proteintech@ptglab.com
W: ptglab.com

This product is exclusively available under Proteintech Group brand and is not available to purchase from any other manufacturer.

Ausgewählte Validierungsdaten



Immunofluorescent analysis of (4% PFA) fixed human colon cancer tissue using CoraLite® Plus 488 Collagen Type I antibody (CL488-67288, Clone: 1E9A7) at dilution of 1:200.



Immunofluorescent analysis of (4% PFA) fixed human colon cancer tissue using CoraLite® Plus 488 Collagen Type I antibody (CL488-67288, Clone: 1E9A7) at dilution of 1:200.