

Nur für Forschungszwecke

# CD107a / LAMP1 Monoklonaler Antikörper

Katalog-Nr.:CL488-67300



## Allgemeine Informationen

<b>Katalog-Nr.:</b> CL488-67300	<b>GenBank-Zugangsnummer:</b> BC021288	<b>Reinigungsmethode:</b> Protein-A-Reinigung
<b>Größe:</b> 100ul , Konzentration: 1000 µg/ml von3916 Nanodrop;	<b>GeneID (NCBI):</b> 382E9	<b>CloneNo.:</b> 3B2E9
<b>Wirt:</b> Maus	<b>Vollständiger Name:</b> lysosomal-associated membrane protein 1	<b>Empfohlene Verdünnungen:</b> IF 1:50-1:500
<b>Isotyp:</b> IgG2b	<b>Berechnete Masse:</b> 417 aa, 45 kDa	<b>Anregungs-/Emissionsmaxima-Wellenlängen:</b> 493 nm / 522 nm
<b>Immunogen Katalognummer:</b> AG28869	<b>Beobachtete Masse:</b> 90-120 kDa	

## Anwendungen

<b>Geprüfte Anwendungen:</b> FC (Intra), IF	<b>Positivkontrollen:</b> IF : humanes Leberkarzinomgewebe,
<b>Getestete Reaktivität:</b> Human	

## Hintergrundinformationen

LAMP1 (also known as CD107a) is a 90-120 kDa heavily glycosylated membrane protein enriched in the lysosomal membrane. LAMP1 functions to provide selectins with carbohydrate ligands. This protein has also been shown to be a marker of degranulation on lymphocytes such as CD8+ and NK cells and may also play a role in tumor cell differentiation and metastasis.

## Lagerung

**Lagerungsbedingungen:**  
Bei -20°C lagern. Vor Licht schützen. Nach dem Versand ein Jahr stabil.  
**Lagerungspuffer:**  
BS mit 50% Glycerin, 0,05% Proclin300, 0,5% BSA, pH 7,3.  
Aliquotieren ist nicht notwendig bei -20°C Lagerung

\*\*\* 20ul-Größen enthalten 0.1% BSA

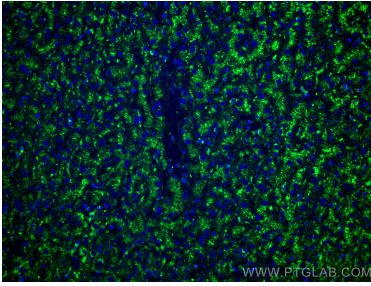
For technical support and original validation data for this product please contact:

T: 1 (888) 4PTGLAB (1-888-478-4522) (toll free in USA), or 1(312) 455-8498 (outside USA)

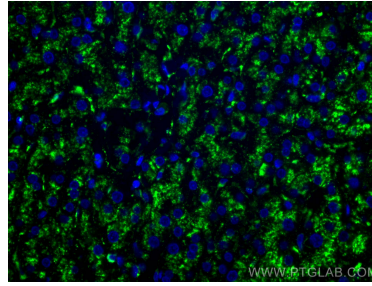
E: proteintech@ptglab.com  
W: ptglab.com

This product is exclusively available under Proteintech Group brand and is not available to purchase from any other manufacturer.

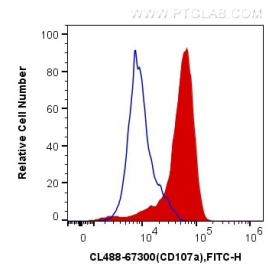
## Ausgewählte Validierungsdaten



Immunofluorescent analysis of (4% PFA) fixed human liver cancer tissue using CoraLite® Plus 488 CD107a antibody (CL488-67300, Clone: 3B2E9) at dilution of 1:200.



Immunofluorescent analysis of (4% PFA) fixed human liver cancer tissue using CoraLite® Plus 488 CD107a antibody (CL488-67300, Clone: 3B2E9) at dilution of 1:200.



1X10<sup>6</sup> NK92 were intracellularly stained with 0.4 ug CoraLite® Plus 488 Anti-Human CD107a / LAMP1 (CL488-67300, Clone:3B2E9) (red), or 0.4 ug x. Cells were fixed with 4% PFA and permeabilized with Flow Cytometry Perm Buffer (PF00011-C).