

Nur für Forschungszwecke

MTMR2 Monoklonaler Antikörper

Katalog-Nr.:CL488-67312

Vorgestelltes Produkt



Allgemeine Informationen

Katalog-Nr.: CL488-67312	GenBank-Zugangsnummer: BC052990	Reinigungsmethode: Protein-A-Reinigung
Größe: 100ul , Konzentration: 1000 µg/ml von8898 Nanodrop;	GeneID (NCBI): 1B11B7	CloneNo.: 1B11B7
Wirt: Maus	Vollständiger Name: myotubularin related protein 2	Anregungs-/Emissionsmaxima- Wellenlängen: 493 nm / 522 nm
Isotyp: IgG2b	Berechnete Masse: 73 kDa	
Immunogen Katalognummer: AG28413	Beobachtete Masse: 66-73 kDa	

Anwendungen

Geprüfte Anwendungen:
FC (Intra)

Getestete Reaktivität:
Human

Hintergrundinformationen

MTMR2(myotubularin-related protein 2) is also named as KIAA1073 and belongs to the non-receptor class myotubularin subfamily, which is characterized by the presence of a phosphatase domain. It may regulate vesicular trafficking in Schwann cells (PMID:17880751) and its reversible phosphorylation represents a critical mechanism for regulating the subcellular localization of MTMR2(PMID:21372139). MTMR2 is a 73 kDa protein in its monomeric form and exist as a dimer within cells and the protein re-localizes to membranes in hypo-osmotic settings(PMID:16399794). Defects in MTMR2 are the cause of Charcot-Marie-Tooth disease type 4B1 (CMT4B1). MTMR2 has two isoforms with the molecular mass of 73 and 66 kDa.

Lagerung

Lagerungsbedingungen:
Bei -20°C lagern. Vor Licht schützen. Nach dem Versand ein Jahr stabil.

Lagerungspuffer:
BS mit 50% Glycerin, 0,05% Proclin300, 0,5% BSA, pH 7,3.

Aliquotieren ist nicht notwendig bei -20°C Lagerung

*** 20ul-Größen enthalten 0.1% BSA

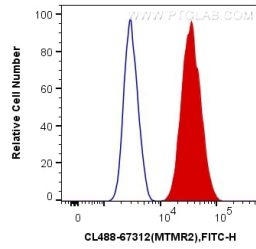
For technical support and original validation data for this product please contact:

T: 1 (888) 4PTGLAB (1-888-478-4522) (toll free
in USA), or 1(312) 455-8498 (outside USA)

E: proteintech@ptglab.com
W: ptglab.com

This product is exclusively available under Proteintech Group brand and is not available to purchase from any other manufacturer.

Ausgewählte Validierungsdaten



1×10^6 HeLa cells were intracellularly stained with 0.4 μ g CoraLite® Plus 488 Anti-Human MTMR2 (CL488-67312, Clone:1B11B7) (red), or 0.4 μ g Mouse IgG2b Isotype Control (CL488-66360-3, Clone: K11B8C4B5) (blue). Cells were fixed with 4% PFA and permeabilized with Flow Cytometry Perm Buffer (PF00011-C).