

Nur für Forschungszwecke

# GSK3B Monoklonaler Antikörper

Katalog-Nr.:CL488-67329



## Allgemeine Informationen

<b>Katalog-Nr.:</b> CL488-67329	<b>GenBank-Zugangsnummer:</b> BC000251	<b>Reinigungsmethode:</b> Protein-G-Reinigung
<b>Größe:</b> 100ul , Konzentration: 1000 µg/ml von2932 Nanodrop;	<b>GeneID (NCBI):</b> 2E9E4	<b>CloneNo.:</b> 2E9E4
<b>Wirt:</b> Maus	<b>Vollständiger Name:</b> glycogen synthase kinase 3 beta	<b>Empfohlene Verdünnungen:</b> IF 1:50-1:500
<b>Isotyp:</b> IgG1	<b>Berechnete Masse:</b> 433 aa, 48 kDa	<b>Anregungs-/Emissionsmaxima- Wellenlängen:</b> 493 nm / 522 nm
<b>Immunogen Katalognummer:</b> AG17320	<b>Beobachtete Masse:</b> 46-48 kDa	

## Anwendungen

<b>Geprüfte Anwendungen:</b> FC (Intra), IF	<b>Positivkontrollen:</b> IF : HeLa-Zellen,
<b>Getestete Reaktivität:</b> Human	

## Hintergrundinformationen

Glycogen synthase kinase-3 (GSK3) is a proline-directed serine-threonine kinase that was initially identified as a phosphorylating and inactivating glycogen synthase .GSK3B is involved in energy metabolism, neuronal cell development, and body pattern formation.In skeletal muscle, it contributes to insulin regulation of glycogen synthesis by phosphorylating and inhibiting GYS1 activity and hence glycogen synthesis. Researches showed that the crystal structure of human GSK3B, expressed in insect cells, at 2.8-angstrom resolution .

## Lagerung

**Lagerungsbedingungen:**  
Bei -20°C lagern. Vor Licht schützen.  
**Lagerungspuffer:**  
BS mit 50% Glycerin, 0,05% Proclin300, 0,5% BSA, pH 7,3.  
Aliquotieren ist nicht notwendig bei -20°C Lagerung

\*\*\* 20ul-Größen enthalten 0.1% BSA

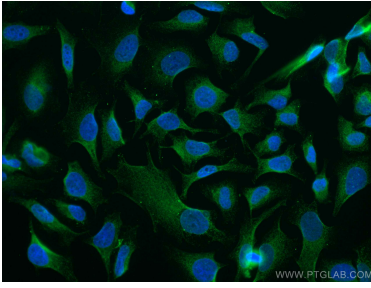
For technical support and original validation data for this product please contact:

T: 1 (888) 4PTGLAB (1-888-478-4522) (toll free  
in USA), or 1(312) 455-8498 (outside USA)

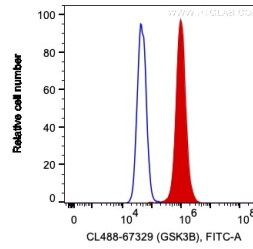
E: proteintech@ptglab.com  
W: ptglab.com

This product is exclusively available under Proteintech Group brand and is not available to purchase from any other manufacturer.

## Ausgewählte Validierungsdaten



Immunofluorescent analysis of (4% PFA) fixed HeLa cells using CoraLite® Plus 488 GSK3B antibody (CL488-67329, Clone: 2E9E4) at dilution of 1:100.



$1 \times 10^6$  HeLa cells were intracellularly stained with 0.2  $\mu$ g CoraLite® Plus 488 Anti-Human GSK3B (CL488-67329, Clone:2E9E4) (red), or 0.2  $\mu$ g Mouse IgG1 Isotype Control (CL488-66360, Clone: T1F8D3F10) (blue). Cells were fixed with 4% PFA and permeabilized with Flow Cytometry Perm Buffer (PF00011-C).