

Nur für Forschungszwecke

ERO1L Monoklonaler Antikörper

Katalog-Nr.:CL488-67416



Allgemeine Informationen

Katalog-Nr.: CL488-67416	GenBank-Zugangsnummer: BC008674	Reinigungsmethode: Protein-A-Reinigung
Größe: 100ul , Konzentration: 1000 µg/ml von30001 Nanodrop;	GeneID (NCBI): 30001	CloneNo.: 1G12E11
Wirt: Maus	Vollständiger Name: ERO 1-like (S. cerevisiae)	Empfohlene Verdünnungen: IF 1:200-1:800
Isotyp: IgG2b	Berechnete Masse: 468 aa, 54 kDa	Anregungs-/Emissionsmaxima-Wellenlängen: 493 nm / 522 nm
Immunogen Katalognummer: AG29910	Beobachtete Masse: 54 kDa	

Anwendungen

Geprüfte Anwendungen: IF	Positivkontrollen: IF : humanes Magenkrebsgewebe,
Getestete Reaktivität: Human, Maus, Ratte	

Hintergrundinformationen

ERO1L, also named as ERO 1-alpha, is an essential oxidoreductase that oxidizes proteins in the endoplasmic reticulum to produce disulfide bonds. It acts by oxidizing directly P4HB/PDI isomerase through a direct disulfide exchange. It does not act as a direct oxidant of folding substrate, but relies on P4HB/PDI to transfer oxidizing equivalent. Associates with ERP44 but not with GRP54, demonstrating that it does not oxidize all PDI related proteins and can discriminate between PDI and related proteins. Its reoxidation probably involves electron transfer to molecular oxygen via FAD. Glutathione may be required to regulate its activity in the endoplasmic reticulum. It may be responsible for a significant proportion of reactive oxygen species (ROS) in the cell, thereby being a source of oxidative stress. It is required for the folding of immunoglobulin proteins. Responsible for the release of the unfolded cholera toxin from reduced P4HB/PDI in case of infection by V.cholerae, thereby playing a role in retrotranslocation of the toxin.

Lagerung

Lagerungsbedingungen:
Bei -20°C lagern. Vor Licht schützen.
Lagerungspuffer:
BS mit 50% Glycerin, 0,05% Proclin300, 0,5% BSA, pH 7,3.
Aliquotieren ist nicht notwendig bei -20°C Lagerung

***** 20ul-Größen enthalten 0.1% BSA**

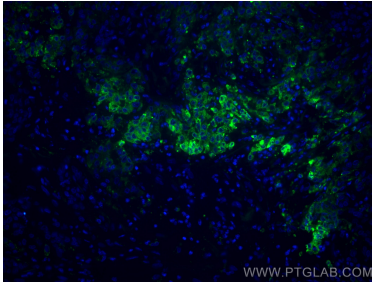
For technical support and original validation data for this product please contact:

T: 1 (888) 4PTGLAB (1-888-478-4522) (toll free in USA), or 1(312) 455-8498 (outside USA)

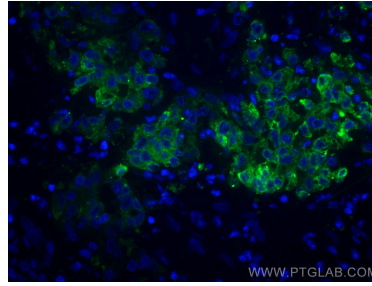
E: proteintech@ptglab.com
W: ptglab.com

This product is exclusively available under Proteintech Group brand and is not available to purchase from any other manufacturer.

Ausgewählte Validierungsdaten



Immunofluorescent analysis of (4% PFA) fixed human stomach cancer tissue using CoraLite® Plus 488 ERO1L antibody (CL488-67416, Clone: 1G12E11) at dilution of 1:200.



Immunofluorescent analysis of (4% PFA) fixed human stomach cancer tissue using CoraLite® Plus 488 ERO1L antibody (CL488-67416, Clone: 1G12E11) at dilution of 1:200.