

Nur für Forschungszwecke

# KLK11 Monoklonaler Antikörper

Katalog-Nr.:CL488-67427



## Allgemeine Informationen

<b>Katalog-Nr.:</b> CL488-67427	<b>GenBank-Zugangsnummer:</b> BC022068	<b>Reinigungsmethode:</b> Protein-G-Reinigung
<b>Größe:</b> 100ul , Konzentration: 1000 µg/ml von11012 Nanodrop;	<b>GeneID (NCBI):</b> von11012	<b>CloneNo.:</b> 1E2B4
<b>Wirt:</b> Maus	<b>Vollständiger Name:</b> kallikrein-related peptidase 11	<b>Empfohlene Verdünnungen:</b> IF 1:50-1:500
<b>Isotyp:</b> IgG1	<b>Berechnete Masse:</b> 250 aa, 27 kDa	<b>Anregungs-/Emissionsmaxima-Wellenlängen:</b> 493 nm / 522 nm
<b>Immunogen Katalognummer:</b> AG29895	<b>Beobachtete Masse:</b> 30-40 kDa	

## Anwendungen

<b>Geprüfte Anwendungen:</b> IF	<b>Positivkontrollen:</b> IF : humanes Mammakarzinomgewebe,
<b>Getestete Reaktivität:</b> Hausschwein, Human, Ratte	

## Hintergrundinformationen

KLK11(Kallikrein-11) is also named as PRSS20, TLSP and belongs to the peptidase S1 family and Kallikrein subfamily. It is a multifunctional protease cleaving several substrates for kallikrein and trypsin and involved in normal physiology processes in bronchus. This full length protein has a signal peptide, a propeptide and four glycosylation sites. It has 4 isoforms produced by alternative splicing with the molecular weight of 31 kDa, 27 kDa,34 kDa and 30 kDa.

## Lagerung

**Lagerungsbedingungen:**  
Bei -20°C lagern. Vor Licht schützen.  
**Lagerungspuffer:**  
BS mit 50% Glycerin, 0,05% Proclin300, 0,5% BSA, pH 7,3.  
Aliquotieren ist nicht notwendig bei -20°C Lagerung

**\*\*\* 20ul-Größen enthalten 0.1% BSA**

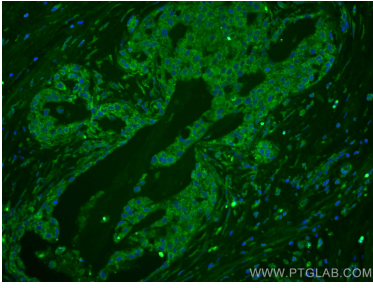
For technical support and original validation data for this product please contact:

T: 1 (888) 4PTGLAB (1-888-478-4522) (toll free in USA), or 1(312) 455-8498 (outside USA)

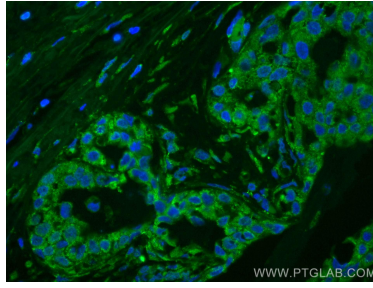
E: proteintech@ptglab.com  
W: ptglab.com

**This product is exclusively available under Proteintech Group brand and is not available to purchase from any other manufacturer.**

## Ausgewählte Validierungsdaten



Immunofluorescent analysis of (4% PFA) fixed human breast cancer tissue using CoraLite® Plus 488 KLK11 antibody (CL488-67427, Clone: 1E2B4) at dilution of 1:200.



Immunofluorescent analysis of (4% PFA) fixed human breast cancer tissue using CoraLite® Plus 488 KLK11 antibody (CL488-67427, Clone: 1E2B4) at dilution of 1:200.