

Nur für Forschungszwecke

# MTH1 Monoklonaler Antikörper

Katalog-Nr.:CL488-67443



## Allgemeine Informationen

<b>Katalog-Nr.:</b> CL488-67443	<b>GenBank-Zugangsnummer:</b> BC014618	<b>Reinigungsmethode:</b> Protein-G-Reinigung
<b>Größe:</b> 100ul , Konzentration: 1000 µg/ml von4521 Nanodrop;	<b>GeneID (NCBI):</b> 2D7G4	<b>CloneNo.:</b> 2D7G4
<b>Wirt:</b> Maus	<b>Vollständiger Name:</b> nudix (nucleoside diphosphate linked IF moiety X)-type motif 1	<b>Empfohlene Verdünnungen:</b> 1:50-1:500
<b>Isotyp:</b> IgG1	<b>Berechnete Masse:</b> 179aa,20 kDa; 197aa,23 kDa	<b>Anregungs-/Emissionsmaxima-Wellenlängen:</b> 493 nm / 522 nm
<b>Immunogen Katalognummer:</b> AG9802	<b>Beobachtete Masse:</b> 19 kDa	

## Anwendungen

<b>Geprüfte Anwendungen:</b> FC (Intra), IF	<b>Positivkontrollen:</b> IF : HepG2-Zellen,
<b>Getestete Reaktivität:</b> Human	

## Hintergrundinformationen

MTH1, also known as NUDT1 or 8-Oxo-dGTPase, is an important repair enzyme that prevents oxidative stress-induced DNA damage through hydrolyzing mutagenic 8-oxo-dGTP into 8-oxo-dGMP. MTH1 is expressed in postmitotic neurons as well as in proliferative tissues, and it is localized both in the mitochondria and nucleus. MTH1 might be a useful marker of oxidative stress and its level increased upon oxidative stress. Increased expression of MTH1 were also found in various cancer tissues and neurodegenerative diseases.

## Lagerung

**Lagerungsbedingungen:**  
Bei -20°C lagern. Vor Licht schützen. Nach dem Versand ein Jahr stabil.  
**Lagerungspuffer:**  
BS mit 50% Glycerin, 0,05% Proclin300, 0,5% BSA, pH 7,3.  
Aliquotieren ist nicht notwendig bei -20°C Lagerung

\*\*\* 20ul-Größen enthalten 0.1% BSA

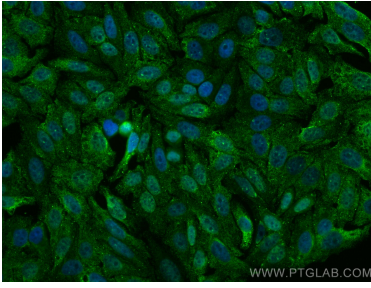
For technical support and original validation data for this product please contact:

T: 1 (888) 4PTGLAB (1-888-478-4522) (toll free in USA), or 1(312) 455-8498 (outside USA)

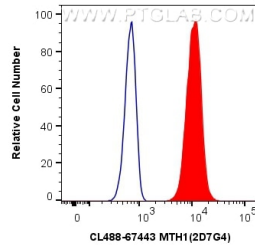
E: proteintech@ptglab.com  
W: ptglab.com

This product is exclusively available under Proteintech Group brand and is not available to purchase from any other manufacturer.

## Ausgewählte Validierungsdaten



Immunofluorescent analysis of (4% PFA) fixed HepG2 cells using CoraLite® Plus 488 MTH1 antibody (CL488-67443, Clone: 2D7G4) at dilution of 1:200.



1X10<sup>6</sup> Jurkat cells were intracellularly stained with 0.4 ug CoraLite® Plus 488 Anti-Human MTH1 (CL488-67443, Clone:2D7G4) (red), or 0.4 ug Control Antibody. Cells were fixed and permeabilized with Transcription Factor Staining Buffer Kit (PF00011).