

Nur für Forschungszwecke

BDH1 Monoklonaler Antikörper

Katalog-Nr.:CL488-67448



Allgemeine Informationen

Katalog-Nr.: CL488-67448	GenBank-Zugangsnummer: BC005844	Reinigungsmethode: Protein-G-Reinigung
Größe: 100ul , Konzentration: 1000 µg/ml von622 Nanodrop;	GeneID (NCBI): 2C3D4	CloneNo.: 2C3D4
Wirt: Maus	Vollständiger Name: 3-hydroxybutyrate dehydrogenase, type 1	Empfohlene Verdünnungen: IF 1:50-1:500
Isotyp: IgG1	Berechnete Masse: 38 kDa	Anregungs-/Emissionsmaxima- Wellenlängen: 493 nm / 522 nm
Immunogen Katalognummer: AG7864	Beobachtete Masse: 31 kDa	

Anwendungen

Geprüfte Anwendungen: IF	Positivkontrollen: IF : Mauslebergewebe,
Getestete Reaktivität: Hausschwein, Human, Maus, Ratte	

Hintergrundinformationen

BDH1 (3-hydroxybutyrate dehydrogenase, type 1) is a 343 amino acid protein that localizes to the mitochondrial matrix and belongs to the short-chain dehydrogenases/reductases (SDR) family. The deduced 343 amino acid protein contains a 46 residue leader peptide, which is cleaved to produce the mature form. It is a lipid-requiring mitochondrial enzyme with a specific requirement of phosphatidylcholine (PC).

Lagerung

Lagerungsbedingungen:
Bei -20°C lagern. Vor Licht schützen.
Lagerungspuffer:
BS mit 50% Glycerin, 0,05% Proclin300, 0,5% BSA, pH 7,3.
Aliquotieren ist nicht notwendig bei -20°C Lagerung

***** 20ul-Größen enthalten 0.1% BSA**

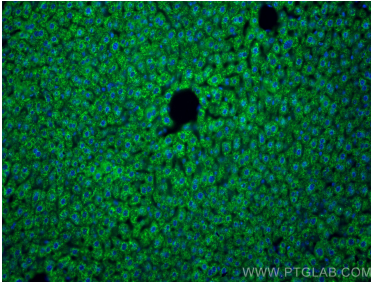
For technical support and original validation data for this product please contact:

T: 1 (888) 4PTGLAB (1-888-478-4522) (toll free
in USA), or 1(312) 455-8498 (outside USA)

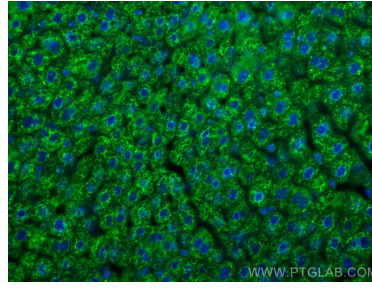
E: proteintech@ptglab.com
W: ptglab.com

This product is exclusively available under Proteintech Group brand and is not available to purchase from any other manufacturer.

Ausgewählte Validierungsdaten



Immunofluorescent analysis of (4% PFA) fixed mouse liver tissue using CoraLite® Plus 488 BDH1 antibody (CL488-67448, Clone: 2C3D4) at dilution of 1:200.



Immunofluorescent analysis of (4% PFA) fixed mouse liver tissue using CoraLite® Plus 488 BDH1 antibody (CL488-67448, Clone: 2C3D4) at dilution of 1:200.