

Nur für Forschungszwecke

RALYL Monoklonaler Antikörper

Katalog-Nr.:CL488-67534



Allgemeine Informationen

| | | |
|---|---|--|
| Katalog-Nr.: CL488-67534 | GenBank-Zugangsnummer: BC031090 | Reinigungsmethode: Protein-G-Reinigung |
| Größe: 100ul , Konzentration: 1000 µg/ml von138046 Nanodrop; | GeneID (NCBI): 138046 | CloneNo.: 1F3F4 |
| Wirt: Maus | Vollständiger Name: RALY RNA binding protein-like | Empfohlene Verdünnungen: IF 1:50-1:500 |
| Isotyp: IgG1 | Berechnete Masse: 291 aa, 32 kDa | Anregungs-/Emissionsmaxima-Wellenlängen: 493 nm / 522 nm |
| Immunogen Katalognummer: AG11676 | Beobachtete Masse: 35-40 kDa | |

Anwendungen

| | |
|--|---|
| Geprüfte Anwendungen: FC (Intra), IF | Positivkontrollen: IF : HepG2-Zellen, |
| Getestete Reaktivität: Hausschwein, Human, Maus, Ratte | |

Hintergrundinformationen

RALY RNA binding protein-like (RALYL) belongs to the RALY subfamily. RALYL locates in 8q21.2, the function of which is RNA-binding and nucleotide binding. The RALYL high expression in the normal adrenal, kidney and brain (Shyamsundar et al., 2005). Furthermore, RALYL expression down-regulated correlates with mental disorder (Lee et al., 2007), Parkinson's disease (Moran et al., 2006), brain cancer (Maris et al., 2008), adrenal cancer (Giordano et al., 2009) and kidney cancer (Higgins et al., 2003). The expression of RALYL was significantly low in Clear Cell Renal Cell Carcinoma and correlated with a poor prognosis in a large number of clinical samples. Our findings showed that RALYL may be a potential therapeutic target as well as a poor prognostic

Lagerung

Lagerungsbedingungen:
Bei -20°C lagern. Vor Licht schützen. Nach dem Versand ein Jahr stabil.
Lagerungspuffer:
BS mit 50% Glycerin, 0,05% Proclin300, 0,5% BSA, pH 7,3.
Aliquotieren ist nicht notwendig bei -20°C Lagerung

*** 20ul-Größen enthalten 0.1% BSA

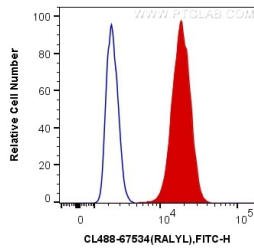
For technical support and original validation data for this product please contact:

T: 1 (888) 4PTGLAB (1-888-478-4522) (toll free in USA), or 1(312) 455-8498 (outside USA)

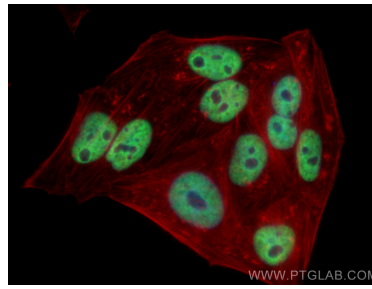
E: proteintech@ptglab.com
W: ptglab.com

This product is exclusively available under Proteintech Group brand and is not available to purchase from any other manufacturer.

Ausgewählte Validierungsdaten



1X10⁶ HepG2 cells were intracellularly stained with 0.4 ug CoraLite® Plus 488 Anti-Human RALYL (CL488-67534, Clone:1F3F4) (red), or 0.4 ug Control Antibody. Cells were fixed and permeabilized with Transcription Factor Staining Buffer Kit (PF00011).



Immunofluorescent analysis of (4% PFA) fixed HepG2 cells using CoraLite® Plus 488 RALYL antibody (CL488-67534, Clone: 1F3F4) at dilution of 1:200, CL594-Phalloidin (red).