

Nur für Forschungszwecke

MTMR14 Monoklonaler Antikörper

Katalog-Nr.:CL488-67561



Allgemeine Informationen

Katalog-Nr.: CL488-67561	GenBank-Zugangsnummer: BC050626	Reinigungsmethode: Protein-A-Reinigung
Größe: 100ul , Konzentration: 1000 µg/ml von64419	GeneID (NCBI): von64419	CloneNo.: 1A8B2
Nanodrop;	Vollständiger Name: myotubularin related protein 14	Empfohlene Verdünnungen: IF 1:50-1:500
Wirt: Maus	Berechnete Masse: 72 kDa	Anregungs-/Emissionsmaxima-Wellenlängen: 493 nm / 522 nm
Isotyp: IgG2b	Beobachtete Masse: 74 kDa	
Immunogen Katalognummer: AG6883		

Anwendungen

Geprüfte Anwendungen: IF	Positivkontrollen: IF : Maus-Skelettmuskelgewebe,
Getestete Reaktivität: Human, Maus, Ratte	

Hintergrundinformationen

MTMR14, also known as Jumpy, belongs to the MTM1/MTMRs family which has 15 members that divided into two subgroup: catalytically inactive and active. MTMR14 is a catalytically active member possessing an active phosphatase domain, that specifically dephosphorylates PI3P and phosphatidylinositol (3,5)-bisphosphate (PI3,5P2) at position 3 on inositol ring. A remarkable feature of the MTM1/MTMRs family is the association between a catalytically inactive member and a catalytically active member, which plays an important regulatory role. MTMR14 has 3 isoforms with molecular weight of 60-72 kDa, and also can be detected as a higher molecular weight due to the heterodimerization with other MTMR members.

Lagerung

Lagerungsbedingungen:
Bei -20°C lagern. Vor Licht schützen.
Lagerungspuffer:
BS mit 50% Glycerin, 0,05% Proclin300, 0,5% BSA, pH 7,3.
Aliquotieren ist nicht notwendig bei -20°C Lagerung

*** 20ul-Größen enthalten 0.1% BSA

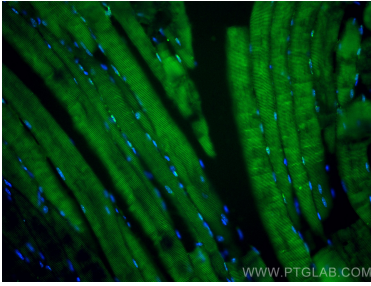
For technical support and original validation data for this product please contact:

T: 1 (888) 4PTGLAB (1-888-478-4522) (toll free in USA), or 1(312) 455-8498 (outside USA)

E: proteintech@ptglab.com
W: ptglab.com

This product is exclusively available under Proteintech Group brand and is not available to purchase from any other manufacturer.

Ausgewählte Validierungsdaten



Immunofluorescent analysis of (4% PFA) fixed mouse skeletal muscle tissue using CoraLite® Plus 488 MTMR14 antibody (CL488-67561, Clone: 1A8B2) at dilution of 1:200.