

Nur für Forschungszwecke

IGFBP6 Monoklonaler Antikörper

Katalog-Nr.:CL488-67567



Allgemeine Informationen

Katalog-Nr.: CL488-67567	GenBank-Zugangsnummer: BC011708	Reinigungsmethode: Protein-A-Reinigung
Größe: 100ul , Konzentration: 1000 µg/ml von3489 Nanodrop;	GeneID (NCBI): 3489	CloneNo.: 1D12B3
Wirt: Maus	Vollständiger Name: insulin-like growth factor binding protein 6	Anregungs-/Emissionsmaxima- Wellenlängen: 493 nm / 522 nm
Isotyp: IgG2b	Berechnete Masse: 25 kDa	
Immunogen Katalognummer: AG30050	Beobachtete Masse: 30-33 kDa	

Anwendungen

Geprüfte Anwendungen:
FC (Intra)

Getestete Reaktivität:
Human

Hintergrundinformationen

Insulin-like growth factor (IGF) binding protein (IGFBP6), a 240 amino acid protein, contains an IGFBP N-terminal domain and a thyroglobulin type-1 domain. It modulates the activity of IGF and shows independent effects of IGF, such as growth inhibition and apoptosis. It can decrease the proliferation and survival of cancer cells such as lung cancer cells and naso-pharyngeal cancer cells. IGFBP-6 is distinctive for its 50-fold higher binding affinity for IGF-II over IGF-I and this specificity makes it an attractive potential therapeutic candidate for IGF-II-dependent pediatric malignancies such as rhabdomyosarcoma (RMS). In addition, it was found that IGFBP6 can promote the migration of RMS cells in an IGF-independent manner, and MAPK pathways were involved in this process. Further study reported that IGFBP6 is one of most highly expressed proteins in varicose vein tissues and is involved in the proliferation of vascular smooth muscle cells (VSMCs), which may provide insights into the underlying pathogenesis of varicose vein.

Lagerung

Lagerungsbedingungen:
Bei -20°C lagern. Vor Licht schützen. Nach dem Versand ein Jahr stabil.

Lagerungspuffer:
BS mit 50% Glycerin, 0,05% Proclin300, 0,5% BSA, pH 7,3.

Aliquotieren ist nicht notwendig bei -20°C Lagerung

***** 20ul-Größen enthalten 0.1% BSA**

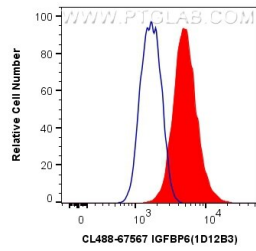
For technical support and original validation data for this product please contact:

T: 1 (888) 4PTGLAB (1-888-478-4522) (toll free
in USA), or 1(312) 455-8498 (outside USA)

E: proteintech@ptglab.com
W: ptglab.com

This product is exclusively available under Proteintech Group brand and is not available to purchase from any other manufacturer.

Ausgewählte Validierungsdaten



1X10⁶ A431 cells were intracellularly stained with 0.4 ug CoraLite® Plus 488 Anti-Human IGFBP6 (CL488-67567, Clone:1D12B3) (red), or 0.4 ug Control Antibody. Cells were fixed with 4% PFA and permeabilized with Flow Cytometry Perm Buffer (PF00011-C).