

Nur für Forschungszwecke

SDHB Monoklonaler Antikörper

Katalog-Nr.:CL488-67600



Allgemeine Informationen

Katalog-Nr.: CL488-67600	GenBank-Zugangsnummer: BC007840	Reinigungsmethode: Protein-G-Reinigung
Größe: 100ul , Konzentration: 1000 µg/ml von6390 Nanodrop;	GeneID (NCBI): 1A2A5	CloneNo.: 1A2A5
Wirt: Maus	Vollständiger Name: succinate dehydrogenase complex, subunit B, iron sulfur (lp)	Empfohlene Verdünnungen: IF 1:50-1:500
Isotyp: IgG1	Berechnete Masse: 32 kDa	Anregungs-/Emissionsmaxima- Wellenlängen: 493 nm / 522 nm
Immunogen Katalognummer: AG29868	Beobachtete Masse: 28-32 kDa	

Anwendungen

Geprüfte Anwendungen: IF	Positivkontrollen: IF : humanes Leberkarzinomgewebe,
Getestete Reaktivität: Human, Maus, Ratte	

Hintergrundinformationen

SDHB(Succinate dehydrogenase [ubiquinone] iron-sulfur subunit, mitochondrial) is also named as SDH, SDH1 and belongs to the succinate dehydrogenase/fumarate reductase iron-sulfur protein family. The SDHD, SDHB, and SDHC genes encode subunits of mitochondrial complex II (succinate dehydrogenase). Mitochondrial complex II is a heterotetrameric complex involved in the aerobic electron transport chain and catalyses the oxidation of succinate to fumarate (Krebs cycle) with transport of electrons to the ubiquinone pool. SDHA and SDHB are the hydrophilic catalytic part of the complex and are highly conserved(J Med Genet 2004;41:e99). Defects in SDHB are a cause of susceptibility to pheochromocytoma (PCC), paragangliomas type 4 (PGL4), paraganglioma and gastric stromal sarcoma (PGSS) and Cowden-like syndrome (CWDLS).

Lagerung

Lagerungsbedingungen:
Bei -20°C lagern. Vor Licht schützen.
Lagerungspuffer:
BS mit 50% Glycerin, 0,05% Proclin300, 0,5% BSA, pH 7,3.
Aliquotieren ist nicht notwendig bei -20°C Lagerung

***** 20ul-Größen enthalten 0.1% BSA**

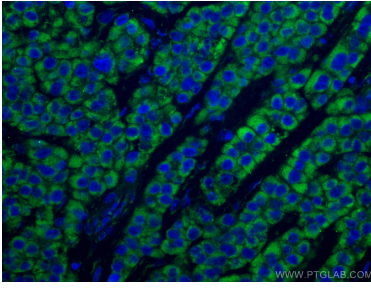
For technical support and original validation data for this product please contact:

T: 1 (888) 4PTGLAB (1-888-478-4522) (toll free
in USA), or 1(312) 455-8498 (outside USA)

E: proteintech@ptglab.com
W: ptglab.com

This product is exclusively available under Proteintech Group brand and is not available to purchase from any other manufacturer.

Ausgewählte Validierungsdaten



Immunofluorescent analysis of (4% PFA) fixed human liver cancer tissue using CoraLite® Plus 488 SDHB antibody (CL488-67600, Clone: 1A2A5) at dilution of 1:200.