

Nur für Forschungszwecke

ICAM2 Monoklonaler Antikörper

Katalog-Nr.:CL488-67628



Allgemeine Informationen

Katalog-Nr.: CL488-67628	GenBank-Zugangsnummer: BC003097	Reinigungsmethode: Protein-A-Reinigung
Größe: 100ul , Konzentration: 1000 µg/ml von3384 Nanodrop;	GeneID (NCBI): 1000000000	CloneNo.: 1H3C6
Wirt: Maus	Vollständiger Name: intercellular adhesion molecule 2	Anregungs-/Emissionsmaxima-Wellenlängen: 493 nm / 522 nm
Isotyp: IgG2a	Berechnete Masse: 31 kDa	
Immunogen Katalognummer: AG29441	Beobachtete Masse: 55-60 kDa	

Anwendungen

Geprüfte Anwendungen:
FC (Intra)

Getestete Reaktivität:
Human

Hintergrundinformationen

ICAM2 is a cell adhesion protein having important roles in cell migration, especially during inflammation when leukocytes cross the endothelium. Initially described as a receptor for lymphocyte function-associated antigen-1 (LFA1), ICAM2 may play a role in lymphocyte recirculation by blocking LFA-1-dependent cell adhesion. It mediates adhesive interactions important for antigen-specific immune response, NK-cell mediated clearance, lymphocyte recirculation, and other cellular interactions important for immune response and surveillance.

Lagerung

Lagerungsbedingungen:
Bei -20°C lagern. Vor Licht schützen. Nach dem Versand ein Jahr stabil.

Lagerungspuffer:
BS mit 50% Glycerin, 0,05% Proclin300, 0,5% BSA, pH 7,3.

Aliquotieren ist nicht notwendig bei -20°C Lagerung

***** 20ul-Größen enthalten 0.1% BSA**

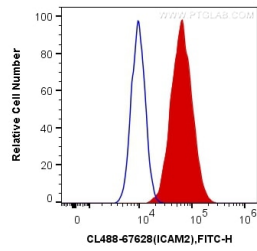
For technical support and original validation data for this product please contact:

T: 1 (888) 4PTGLAB (1-888-478-4522) (toll free in USA), or 1(312) 455-8498 (outside USA)

E: proteintech@ptglab.com
W: ptglab.com

This product is exclusively available under Proteintech Group brand and is not available to purchase from any other manufacturer.

Ausgewählte Validierungsdaten



1X10⁶ HUVEC cells were intracellularly stained with 0.4 ug CoraLite® Plus 488 Anti-Human ICAM2 (CL488-67628, Clone:1H3C6) (red), or 0.4 ug Control Antibody. Cells were fixed with 4% PFA and permeabilized with Flow Cytometry Perm Buffer (PF00011-C).