

Nur für Forschungszwecke

FER Monoklonaler Antikörper

Katalog-Nr.:CL488-67671



Allgemeine Informationen

Katalog-Nr.: CL488-67671	GenBank-Zugangsnummer: BC017060	Reinigungsmethode: Protein-A-Reinigung
Größe: 100ul , Konzentration: 1000 µg/ml von2241	GeneID (NCBI): von2241	CloneNo.: 1E3H2
Nanodrop;	Vollständiger Name: fer (fps/fes related) tyrosine kinase	Anregungs-/Emissionsmaxima-Wellenlängen: 493 nm / 522 nm
Wirt: Maus	Berechnete Masse: 822 aa, 95 kDa	
Isotyp: IgG2a	Beobachtete Masse: 95 kDa	
Immunogen Katalognummer: AG19176		

Anwendungen

Geprüfte Anwendungen:
FC (Intra)

Getestete Reaktivität:
Human

Hintergrundinformationen

FER(Tyrosine-protein kinase Fer) is also named as TYK3 and belongs to the protein kinase superfamily. Tyrosine-protein kinase acts downstream of cell surface receptors for growth factors and plays a role in the regulation of the actin cytoskeleton, microtubule assembly, lamellipodia formation, cell adhesion, cell migration and chemotaxis. This protein has 3 isoforms produced by alternative promoter usage and alternative splicing.

Lagerung

Lagerungsbedingungen:
Bei -20°C lagern. Vor Licht schützen. Nach dem Versand ein Jahr stabil.

Lagerungspuffer:
BS mit 50% Glycerin, 0,05% Proclin300, 0,5% BSA, pH 7,3.

Aliquotieren ist nicht notwendig bei -20°C Lagerung

***** 20ul-Größen enthalten 0.1% BSA**

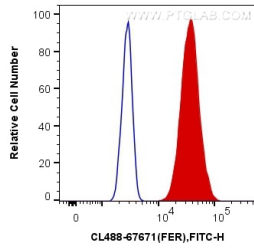
For technical support and original validation data for this product please contact:

T: 1 (888) 4PTGLAB (1-888-478-4522) (toll free in USA), or 1(312) 455-8498 (outside USA)

E: proteintech@ptglab.com
W: ptglab.com

This product is exclusively available under Proteintech Group brand and is not available to purchase from any other manufacturer.

Ausgewählte Validierungsdaten



1X10⁶ HeLa cells were intracellularly stained with 0.4 ug Coralite® Plus 488 Anti-Human FER (CL488-67671, Clone:1E3H2) (red), or 0.4 ug Mouse IgG2a Isotype Control (CL488-66360-2, Clone: K11A1B2A2) (blue). Cells were fixed with 4% PFA and permeabilized with Flow Cytometry Perm Buffer (PF00011-C).