

Nur für Forschungszwecke

ASL Monoklonaler Antikörper

Katalog-Nr.:CL488-67692



Allgemeine Informationen

Katalog-Nr.: CL488-67692	GenBank-Zugangsnummer: BC008195	Reinigungsmethode: Protein-A-Reinigung
Größe: 100ul , Konzentration: 1000 µg/ml von435 Nanodrop;	GeneID (NCBI): Vollständiger Name: argininosuccinate lyase	CloneNo.: 1G9H3
Wirt: Maus	Berechnete Masse: 55 kDa	Anregungs-/Emissionsmaxima- Wellenlängen: 493 nm / 522 nm
Isotyp: IgG2b	Beobachtete Masse: 50 kDa	
Immunogen Katalognummer: AG30517		

Anwendungen

Geprüfte Anwendungen:
FC (Intra)

Getestete Reaktivität:
Hausschwein, Human, Maus, Ratte

Hintergrundinformationen

Argininosuccinate lyase (ASL), one of the significant UC enzymes, catalyzes argininosuccinate cleavage to generate arginine and fumarate. Arginine is then catalyzed by arginase to ornithine and polyamines, which are found to promote cancer cell proliferation and growth. Importantly, ASL ectopic expression is closely associated with poor prognosis of colorectal cancer, hepatocellular. ASL is a member of the aspartate/fumarase superfamily. Enzymes of this superfamily share similar tetrameric structure and active site, though the sequence identities between different members are quite low (less than 20%). Members of this superfamily have been recognised as drug targets for microbial infections. ASL is a 464-amino-acid enzyme with a molecular mass of 49.7 kDa. (PMID: 22386318 PMID: 31018905)

Lagerung

Lagerungsbedingungen:
Bei -20°C lagern. Vor Licht schützen. Nach dem Versand ein Jahr stabil.

Lagerungspuffer:
BS mit 50% Glycerin, 0,05% Proclin300, 0,5% BSA, pH 7,3.

Aliquotieren ist nicht notwendig bei -20°C Lagerung

*** 20ul-Größen enthalten 0.1% BSA

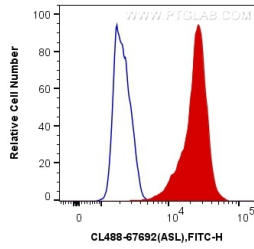
For technical support and original validation data for this product please contact:

T: 1 (888) 4PTGLAB (1-888-478-4522) (toll free
in USA), or 1(312) 455-8498 (outside USA)

E: proteintech@ptglab.com
W: ptglab.com

This product is exclusively available under Proteintech Group brand and is not available to purchase from any other manufacturer.

Ausgewählte Validierungsdaten



1X10⁶ K-562 cells were intracellularly stained with 0.4 ug CoraLite® Plus 488 Anti-Human ASL (CL488-67692, Clone:1G9H3) (red), or 0.4 ug Mouse IgG2b Isotype Control (CL488-66360-3, Clone: K11B8C4B5) (blue). Cells were fixed with 4% PFA and permeabilized with Flow Cytometry Perm Buffer (PF00011-C).