

Nur für Forschungszwecke

# PRKAR2A Monoklonaler Antikörper

Katalog-Nr.:CL488-67751



## Allgemeine Informationen

<b>Katalog-Nr.:</b> CL488-67751	<b>GenBank-Zugangsnummer:</b> BC002763	<b>Reinigungsmethode:</b> Protein-G-Reinigung
<b>Größe:</b> 100ul , Konzentration: 1000 µg/ml von5576 Nanodrop;	<b>GeneID (NCBI):</b> von5576	<b>CloneNo.:</b> 1B2B3
<b>Wirt:</b> Maus	<b>Vollständiger Name:</b> protein kinase, cAMP-dependent, regulatory, type II, alpha	<b>Empfohlene Verdünnungen:</b> IF 1:50-1:500
<b>Isotyp:</b> IgG1	<b>Berechnete Masse:</b> 43 kDa	<b>Anregungs-/Emissionsmaxima- Wellenlängen:</b> 493 nm / 522 nm
<b>Immunogen Katalognummer:</b> AG29893	<b>Beobachtete Masse:</b> 50 kDa	

## Anwendungen

<b>Geprüfte Anwendungen:</b> FC (Intra), IF	<b>Positivkontrollen:</b> IF : HeLa-Zellen,
<b>Getestete Reaktivität:</b> Human, Maus, Ratte	

## Hintergrundinformationen

The effects of cAMP in most tissues and cell types are mainly modulated via protein kinase A, a heterotetrameric protein complex consisting of two regulatory and two catalytic subunits. The regulatory subunit of cAMP-dependent protein kinase (PRKAR2A) is one of the regulatory subunits and the gene is located on chromosome region 3p21.3-p21.2. The expression of PRKAR2A is tightly regulated during spermatogenesis, a significant increase in expression of this gene was also found in the human myometrium during pregnancy.

## Lagerung

**Lagerungsbedingungen:**  
Bei -20°C lagern. Vor Licht schützen. Nach dem Versand ein Jahr stabil.  
**Lagerungspuffer:**  
BS mit 50% Glycerin, 0,05% Proclin300, 0,5% BSA, pH 7,3.  
**Aliquotieren ist nicht notwendig bei -20°C Lagerung**

**\*\*\* 20ul-Größen enthalten 0.1% BSA**

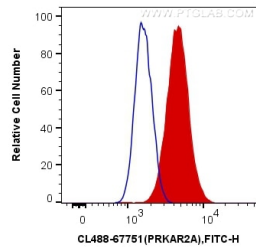
For technical support and original validation data for this product please contact:

T: 1 (888) 4PTGLAB (1-888-478-4522) (toll free  
in USA), or 1(312) 455-8498 (outside USA)

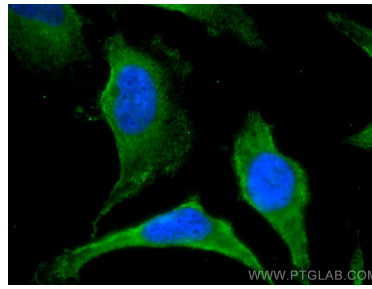
E: [proteintech@ptglab.com](mailto:proteintech@ptglab.com)  
W: [ptglab.com](http://ptglab.com)

**This product is exclusively available under Proteintech Group brand and is not available to purchase from any other manufacturer.**

## Ausgewählte Validierungsdaten



1X10<sup>6</sup> MCF-7 cells were intracellularly stained with 0.4 ug CoraLite® Plus 488 Anti-Human PRKAR2A (CL488-67751, Clone:1B2B3) (red), or 0.4 ug Control Antibody. Cells were fixed with 4% PFA and permeabilized with Flow Cytometry Perm Buffer (PF00011-C).



Immunofluorescent analysis of (-20°C Methanol) fixed HeLa cells using CoraLite® Plus 488 PRKAR2A antibody (CL488-67751, Clone: 1B2B3 ) at dilution of 1:200.