

Nur für Forschungszwecke

# EED Monoklonaler Antikörper

Katalog-Nr.:CL488-67756



## Allgemeine Informationen

<b>Katalog-Nr.:</b> CL488-67756	<b>GenBank-Zugangsnummer:</b> BC068995	<b>Reinigungsmethode:</b> Protein-A-Reinigung
<b>Größe:</b> 100ul , Konzentration: 1000 µg/ml von8726 Nanodrop;	<b>GeneID (NCBI):</b> von8726	<b>CloneNo.:</b> 1D11D4
<b>Wirt:</b> Maus	<b>Vollständiger Name:</b> embryonic ectoderm development	<b>Empfohlene Verdünnungen:</b> IF 1:50-1:500
<b>Isotyp:</b> IgG2b	<b>Berechnete Masse:</b> 466 aa, 53 kDa	<b>Anregungs-/Emissionsmaxima-Wellenlängen:</b> 493 nm / 522 nm
<b>Immunogen Katalognummer:</b> AG10369		

## Anwendungen

<b>Geprüfte Anwendungen:</b> FC (Intra), IF	<b>Positivkontrollen:</b> IF : Maushodengewebe,
<b>Getestete Reaktivität:</b> Human, Maus	

## Hintergrundinformationen

EED is a member of the Polycomb-group (PcG) family. PcG family members form multimeric protein complexes, which are involved in maintaining the transcriptional repressive state of genes over successive cell generations. This protein interacts with enhancer of zeste 2, the cytoplasmic tail of integrin beta7, immunodeficiency virus type 1 (HIV-1) MA protein, and histone deacetylase proteins. This protein mediates repression of gene activity through histone deacetylation, and may act as a specific regulator of integrin function. EED has three isoforms, with the molecular weight of isoforms 1/2/3: 50/53/46 kDa.

## Lagerung

**Lagerungsbedingungen:**  
Bei -20°C lagern. Vor Licht schützen. Nach dem Versand ein Jahr stabil.  
**Lagerungspuffer:**  
BS mit 50% Glycerin, 0,05% Proclin300, 0,5% BSA, pH 7,3.  
**Aliquotieren ist nicht notwendig bei -20°C Lagerung**

**\*\*\* 20ul-Größen enthalten 0.1% BSA**

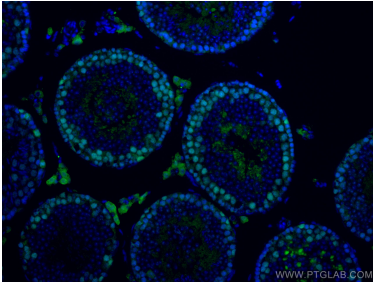
For technical support and original validation data for this product please contact:

T: 1 (888) 4PTGLAB (1-888-478-4522) (toll free in USA), or 1(312) 455-8498 (outside USA)

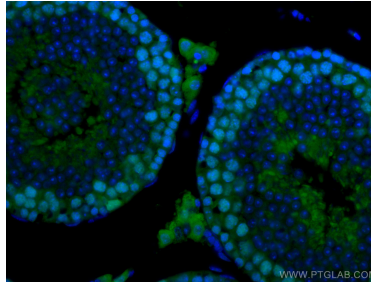
E: [proteintech@ptglab.com](mailto:proteintech@ptglab.com)  
W: [ptglab.com](http://ptglab.com)

**This product is exclusively available under Proteintech Group brand and is not available to purchase from any other manufacturer.**

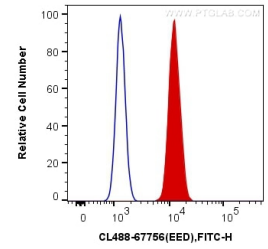
## Ausgewählte Validierungsdaten



Immunofluorescent analysis of (4% PFA) fixed mouse testis tissue using CoraLite® Plus 488 EED antibody (CL488-67756, Clone: 1D11D4) at dilution of 1:200.



Immunofluorescent analysis of (4% PFA) fixed mouse testis tissue using CoraLite® Plus 488 EED antibody (CL488-67756, Clone: 1D11D4) at dilution of 1:200.



1X10<sup>6</sup> HeLa cells were intracellularly stained with 0.2 ug CoraLite® Plus 488 Anti-Human EED (CL488-67756, Clone:1D11D4) (red), or 0.2 ug Mouse IgG2b Isotype Control (CL488-66360-3, Clone: K11B8C4B5) (blue). Cells were fixed and permeabilized with Transcription Factor Staining Buffer Kit (PF00011).