

Nur für Forschungszwecke

# GALE Monoklonaler Antikörper

Katalog-Nr.:CL488-67772



## Allgemeine Informationen

<b>Katalog-Nr.:</b> CL488-67772	<b>GenBank-Zugangsnummer:</b> BC050685	<b>Reinigungsmethode:</b> Protein-A-Reinigung
<b>Größe:</b> 100ul , Konzentration: 1000 µg/ml von2582 Nanodrop;	<b>GeneID (NCBI):</b> 2582	<b>CloneNo.:</b> 3F2C2
<b>Wirt:</b> Maus	<b>Vollständiger Name:</b> UDP-galactose-4-epimerase	<b>Anregungs-/Emissionsmaxima-Wellenlängen:</b> 493 nm / 522 nm
<b>Isotyp:</b> IgG2b	<b>Berechnete Masse:</b> 38 kDa	
<b>Immunogen Katalognummer:</b> AG6571	<b>Beobachtete Masse:</b> 38 kDa	

## Anwendungen

**Geprüfte Anwendungen:**  
FC (Intra)

**Getestete Reaktivität:**  
Human

## Hintergrundinformationen

GALE(Galactowaldenase) is also named as UDP-glucose 4-epimerase, UDP-galactose 4-epimerase, and belongs to the sugar epimerase family. UDP-galactose 4-epimerase catalyzes the interconversion of UDP-glucose and UDP-galactose during normal galactose metabolism. In humans, deficiencies in this enzyme lead to the complex disorder referred to as epimerase-deficiency galactosemia(PMID:10801319).It can exist as a homodimer(PMID:8931134).

## Lagerung

**Lagerungsbedingungen:**  
Bei -20°C lagern. Vor Licht schützen. Nach dem Versand ein Jahr stabil.

**Lagerungspuffer:**  
BS mit 50% Glycerin, 0,05% Proclin300, 0,5% BSA, pH 7,3.

Aliquotieren ist nicht notwendig bei -20°C Lagerung

**\*\*\* 20ul-Größen enthalten 0.1% BSA**

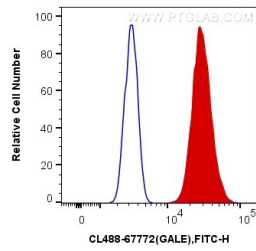
For technical support and original validation data for this product please contact:

T: 1 (888) 4PTGLAB (1-888-478-4522) (toll free in USA), or 1(312) 455-8498 (outside USA)

E: proteintech@ptglab.com  
W: ptglab.com

This product is exclusively available under Proteintech Group brand and is not available to purchase from any other manufacturer.

## Ausgewählte Validierungsdaten



1X10<sup>6</sup> HeLa cells were intracellularly stained with 0.4 ug CoraLite® Plus 488 Anti-Human GALE (CL488-67772, Clone:3F2C2) (red), or 0.4 ug Mouse IgG2b Isotype Control (CL488-66360-3, Clone: K11B8C4B5) (blue). Cells were fixed with 4% PFA and permeabilized with Flow Cytometry Perm Buffer (PF00011-C).