

Nur für Forschungszwecke

# PPP2R2B Monoklonaler Antikörper

Katalog-Nr.:CL488-67783



## Allgemeine Informationen

<b>Katalog-Nr.:</b> CL488-67783	<b>GenBank-Zugangsnummer:</b> BC031790	<b>Reinigungsmethode:</b> Protein-G-Reinigung
<b>Größe:</b> 100ul , Konzentration: 1000 µg/ml von5521 Nanodrop;	<b>GeneID (NCBI):</b> 5521	<b>CloneNo.:</b> 2E1D5
<b>Wirt:</b> Maus	<b>Vollständiger Name:</b> protein phosphatase 2 (formerly 2A), regulatory subunit B, beta isoform	<b>Anregungs-/Emissionsmaxima- Wellenlängen:</b> 493 nm / 522 nm
<b>Isotyp:</b> IgG1	<b>Berechnete Masse:</b> 443 aa, 52 kDa	
<b>Immunogen Katalognummer:</b> AG30774	<b>Beobachtete Masse:</b> 52 kDa	

## Anwendungen

**Geprüfte Anwendungen:**  
FC (Intra)

**Getestete Reaktivität:**  
Hausschwein, Human, Kaninchen, Maus, Ratte

## Hintergrundinformationen

The PPP2R2B gene encodes a deduced 443-amino acid protein of approximately 52 kDa, which is a brain-specific regulatory subunit B of protein phosphatase 2. PPP2R2B is a Subunit of PP2A, a highly conserved constitutive enzyme (PMID:11719278). PPP2R2B (Bβ) is an important regulator of protein phosphatase 2A (PP2A) activity in the brain. Through differential promoter usage and alternative splicing, two major isoforms Bβ1 and Bβ2 with divergent sub-cellular targeting N termini are produced. Bβ plays an important role in neuronal survival. It has 5 isoforms produced by alternative splicing.

## Lagerung

**Lagerungsbedingungen:**  
Bei -20°C lagern. Vor Licht schützen. Nach dem Versand ein Jahr stabil.

**Lagerungspuffer:**  
BS mit 50% Glycerin, 0,05% Proclin300, 0,5% BSA, pH 7,3.

**Aliquotieren ist nicht notwendig bei -20°C Lagerung**

**\*\*\* 20ul-Größen enthalten 0.1% BSA**

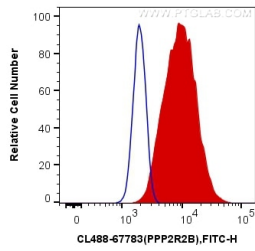
For technical support and original validation data for this product please contact:

T: 1 (888) 4PTGLAB (1-888-478-4522) (toll free  
in USA), or 1(312) 455-8498 (outside USA)

E: proteintech@ptglab.com  
W: ptglab.com

**This product is exclusively available under Proteintech Group brand and is not available to purchase from any other manufacturer.**

## Ausgewählte Validierungsdaten



1X10<sup>6</sup> HeLa cells were intracellularly stained with 0.4 ug Coralite® Plus 488 Anti-Human PPP2R2B (CL488-67783, Clone:2E1D5) (red), or 0.4 ug Control Antibody. Cells were fixed with 4% PFA and permeabilized with Flow Cytometry Perm Buffer (PF00011-C).