

Nur für Forschungszwecke

AIF Monoklonaler Antikörper

Katalog-Nr.:CL488-67791



Allgemeine Informationen

Katalog-Nr.: CL488-67791	GenBank-Zugangsnummer: BC111065	Reinigungsmethode: Protein-A-Reinigung
Größe: 100ul , Konzentration: 1000 µg/ml von9131 Nanodrop;	GeneID (NCBI): von9131	CloneNo.: 8C12B2
Wirt: Maus	Vollständiger Name: apoptosis-inducing factor, mitochondrion-associated, 1	Empfohlene Verdünnungen: IF 1:50-1:500
Isotyp: IgG2a	Berechnete Masse: 609 aa, 66 kDa	Anregungs-/Emissionsmaxima- Wellenlängen: 493 nm / 522 nm
Immunogen Katalognummer: AG12400	Beobachtete Masse: 67 kDa, 57 kDa	

Anwendungen

Geprüfte Anwendungen: IF	Positivkontrollen: IF : humanes Nierengewebe,
Getestete Reaktivität: Human	

Hintergrundinformationen

Apoptosis-inducing factor (AIF) is one of the mitochondrial proteins to be released into the cytosol during apoptosis, and it is discovered as the first protein that regulates caspase-independent apoptosis(PMID:20494118). AIF is encoded as a 67 kDa protein that contains a mitochondrial localization signal (MLS) in the N-terminus.It is cleaved from the 62 kDa to the 57 kDa form following ischemic injury and translocated from the mitochondria to the nucleus in a calpain-dependent manner(PMID:19332058).

Lagerung

Lagerungsbedingungen:
Bei -20°C lagern. Vor Licht schützen.
Lagerungspuffer:
BS mit 50% Glycerin, 0,05% Proclin300, 0,5% BSA, pH 7,3.
Aliquotieren ist nicht notwendig bei -20°C Lagerung

*** 20ul-Größen enthalten 0.1% BSA

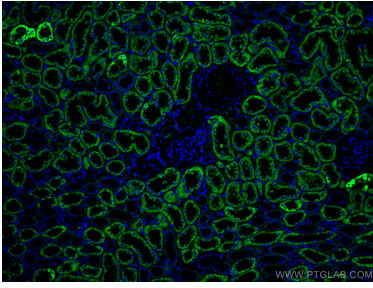
For technical support and original validation data for this product please contact:

T: 1 (888) 4PTGLAB (1-888-478-4522) (toll free
in USA), or 1(312) 455-8498 (outside USA)

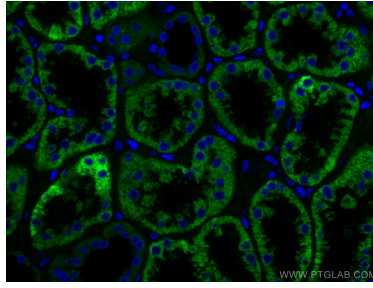
E: proteintech@ptglab.com
W: ptglab.com

This product is exclusively available under Proteintech Group brand and is not available to purchase from any other manufacturer.

Ausgewählte Validierungsdaten



Immunofluorescent analysis of (4% PFA) fixed human kidney tissue using Coralite® Plus 488 AIF antibody (CL488-67791, Clone: 8C12B2) at dilution of 1:200.



Immunofluorescent analysis of (4% PFA) fixed human kidney tissue using Coralite® Plus 488 AIF antibody (CL488-67791, Clone: 8C12B2) at dilution of 1:200.