

Nur für Forschungszwecke

PPP2CA Monoklonaler Antikörper

Katalog-Nr.:CL488-67809



Allgemeine Informationen

Katalog-Nr.: CL488-67809	GenBank-Zugangsnummer: BC031696	Reinigungsmethode: Protein-G-Reinigung
Größe: 100ul , Konzentration: 1000 µg/ml von5515 Nanodrop;	GeneID (NCBI): 5515	CloneNo.: 3A6H5
Wirt: Maus	Vollständiger Name: protein phosphatase 2 (formerly 2A), catalytic subunit, alpha isoform	Anregungs-/Emissionsmaxima- Wellenlängen: 493 nm / 522 nm
Isotyp: IgG1	Berechnete Masse: 309 aa, 36 kDa	
Immunogen Katalognummer: AG4294	Beobachtete Masse: 33 kDa	

Anwendungen

Geprüfte Anwendungen:
FC (Intra)

Getestete Reaktivität:
Human, Ratte

Hintergrundinformationen

PPP2CA, also named as RP-C and PP2A-alpha, belongs to the PPP phosphatase family and PP-1 subfamily. PP2A can modulate the activity of phosphorylase B kinase casein kinase 2, mitogen-stimulated S6 kinase, and MAP-2 kinase. PP2A activity was modestly decreased in AML patients harboring C-KIT/WT. PP2A is a target for C-KIT/TKD and implicated the potential efficacy of therapies targeting PP2A in such AML in future.

Lagerung

Lagerungsbedingungen:
Bei -20°C lagern. Vor Licht schützen. Nach dem Versand ein Jahr stabil.
Lagerungspuffer:
BS mit 50% Glycerin, 0,05% Proclin300, 0,5% BSA, pH 7,3.
Aliquotieren ist nicht notwendig bei -20°C Lagerung

***** 20ul-Größen enthalten 0.1% BSA**

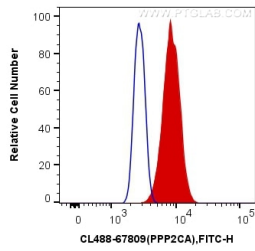
For technical support and original validation data for this product please contact:

T: 1 (888) 4PTGLAB (1-888-478-4522) (toll free
in USA), or 1(312) 455-8498 (outside USA)

E: proteintech@ptglab.com
W: ptglab.com

This product is exclusively available under Proteintech Group brand and is not available to purchase from any other manufacturer.

Ausgewählte Validierungsdaten



1X10⁶ MCF-7 cells were intracellularly stained with 0.4 ug CoraLite® Plus 488 Anti-Human PPP2CA (CL488-67809, Clone:3A6H5) (red), or 0.4 ug Control Antibody. Cells were fixed and permeabilized with Transcription Factor Staining Buffer Kit (PF00011).