

Nur für Forschungszwecke

CAPNS1 Monoklonaler Antikörper

Katalog-Nr.:CL488-67838



Allgemeine Informationen

Katalog-Nr.: CL488-67838	GenBank-Zugangsnummer: BC011903	Reinigungsmethode: Protein-G-Reinigung
Größe: 100ul , Konzentration: 1000 µg/ml von826 Nanodrop;	GeneID (NCBI): von826	CloneNo.: 2B6G6
Wirt: Maus	Vollständiger Name: calpain, small subunit 1	Empfohlene Verdünnungen: IF 1:50-1:500
Isotyp: IgG1	Berechnete Masse: 28 kDa	Anregungs-/Emissionsmaxima- Wellenlängen: 493 nm / 522 nm
Immunogen Katalognummer: AG21885		

Anwendungen

Geprüfte Anwendungen: FC (Intra), IF	Positivkontrollen: IF : A431-Zellen,
Getestete Reaktivität: Human, Ratte	

Hintergrundinformationen

CAPNS1 is also named as CANP, CDPS, CSS1, CANPS, CAPN4 and CALPAIN4. It is a member of the calpain small subunit family, and belongs to the calcium-dependent family. Calpains are calcium-dependent cysteine proteinases that are widely distributed in mammalian cells. The small regulatory subunit consists of an N-terminal domain, containing about 30% glycine residues and a C-terminal Ca-binding domain (PMID: 9228946). This encoded protein is essential for the stability and function of both calpain heterodimers, whose proteolytic activities influence various cellular functions including apoptosis, proliferation, migration, adhesion, and autophagy. Calpains have been implicated in neurodegenerative processes, such as myotonic dystrophy.

Lagerung

Lagerungsbedingungen:
Bei -20°C lagern. Vor Licht schützen.
Lagerungspuffer:
BS mit 50% Glycerin, 0,05% Proclin300, 0,5% BSA, pH 7,3.
Aliquotieren ist nicht notwendig bei -20°C Lagerung

*** 20ul-Größen enthalten 0.1% BSA

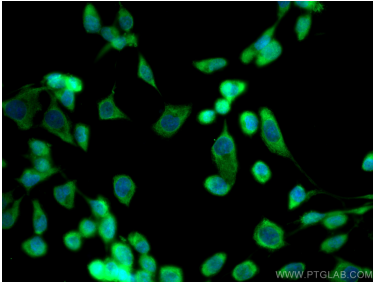
For technical support and original validation data for this product please contact:

T: 1 (888) 4PTGLAB (1-888-478-4522) (toll free
in USA), or 1(312) 455-8498 (outside USA)

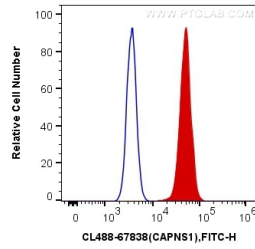
E: proteintech@ptglab.com
W: ptglab.com

This product is exclusively available under Proteintech Group brand and is not available to purchase from any other manufacturer.

Ausgewählte Validierungsdaten



Immunofluorescent analysis of (-20°C Methanol) fixed A431 cells using CoraLite® Plus 488 CAPNS1 antibody (CL488-67838, Clone: 2B6G6) at dilution of 1:200.



1X10⁶ HeLa cells were intracellularly stained with 0.4 ug CoraLite® Plus 488 Anti-Human CAPNS1 (CL488-67838, Clone:2B6G6) (red), or 0.4 ug Mouse IgG1 Isotype Control (CL488-66360, Clone: T1F8D3F10) (blue). Cells were fixed with 4% PFA and permeabilized with Flow Cytometry Perm Buffer (PF00011-C).