

Nur für Forschungszwecke

RUVBL2 Monoklonaler Antikörper

Katalog-Nr.:CL488-67851



Allgemeine Informationen

Katalog-Nr.: CL488-67851	GenBank-Zugangsnummer: BC000428	Reinigungsmethode: Protein-A-Reinigung
Größe: 100ul , Konzentration: 1000 µg/ml von10856 Nanodrop;	GeneID (NCBI): von10856	CloneNo.: 1A1A4
Wirt: Maus	Vollständiger Name: RuvB-like 2 (E. coli)	Empfohlene Verdünnungen: IF 1:200-1:800
Isotyp: IgG2b	Berechnete Masse: 51 kDa	Anregungs-/Emissionsmaxima-Wellenlängen: 493 nm / 522 nm
Immunogen Katalognummer: AG0253	Beobachtete Masse: 51 kDa	

Anwendungen

Geprüfte Anwendungen: FC (Intra), IF	Positivkontrollen: IF : HepG2-Zellen,
Getestete Reaktivität: Human, Maus, Ratte	

Hintergrundinformationen

RUVBL2 belongs to the conserved ATPases associated with various cellular activities (AAA+) protein subfamily, which is characterized by the presence of conserved Walker A and B motifs that are involved in ATP binding and hydrolysis. The AAA+ (ATPases associated with diverse cellular activities) ATPases, RUVBL1 and RUVBL2, were originally isolated as components of transcriptional complexes and shown to function in a number of different cellular processes, including transcriptional regulation, chromatin remodelling and DNA damage responses. (PMID: 31572066, PMID: 31138842)

Lagerung

Lagerungsbedingungen:
Bei -20°C lagern. Vor Licht schützen. Nach dem Versand ein Jahr stabil.
Lagerungspuffer:
BS mit 50% Glycerin, 0,05% Proclin300, 0,5% BSA, pH 7,3.
Aliquotieren ist nicht notwendig bei -20°C Lagerung

***** 20ul-Größen enthalten 0.1% BSA**

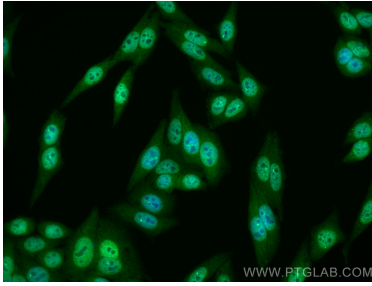
For technical support and original validation data for this product please contact:

T: 1 (888) 4PTGLAB (1-888-478-4522) (toll free in USA), or 1(312) 455-8498 (outside USA)

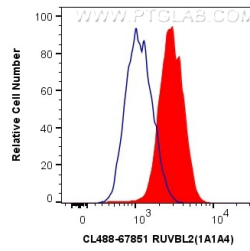
E: proteintech@ptglab.com
W: ptglab.com

This product is exclusively available under Proteintech Group brand and is not available to purchase from any other manufacturer.

Ausgewählte Validierungsdaten



Immunofluorescent analysis of (4% PFA) fixed HepG2 cells using CoraLite® Plus 488 RUVBL2 antibody (CL488-67851, Clone: 1A1A4) at dilution of 1:200.



1X10⁶ HL-60 cells were intracellularly stained with 0.4 ug CoraLite® Plus 488 Anti-Human RUVBL2 (CL488-67851, Clone:1A1A4) (red), or 0.4 ug Mouse IgG2b Isotype Control (CL488-66360-3, Clone: K11B8C4B5) (blue). Cells were fixed and permeabilized with Transcription Factor Staining Buffer Kit (PF00011).