

Nur für Forschungszwecke

# CBBF Monoklonaler Antikörper

Katalog-Nr.:CL488-67885



## Allgemeine Informationen

<b>Katalog-Nr.:</b> CL488-67885	<b>GenBank-Zugangsnummer:</b> BC018509	<b>Reinigungsmethode:</b> Protein-G-Reinigung
<b>Größe:</b> 100ul, Konzentration: 1000 µg/ml von 865 Nanodrop;	<b>GeneID (NCBI):</b> 1D7F2	<b>CloneNo.:</b> 1D7F2
<b>Wirt:</b> Maus	<b>Vollständiger Name:</b> core-binding factor, beta subunit	<b>Anregungs-/Emissionsmaxima-Wellenlängen:</b> 493 nm / 522 nm
<b>Isotyp:</b> IgG1	<b>Berechnete Masse:</b> 182 aa, 22 kDa	
<b>Immunogen Katalognummer:</b> AG31183		

## Anwendungen

**Geprüfte Anwendungen:**  
FC (Intra)

**Getestete Reaktivität:**  
Human

## Hintergrundinformationen

CBBF (core binding factor subunit  $\beta$ ), forms the heterodimeric complex core-binding factor (CBF). As a critical transcription factor, CBBF is frequently mutated in breast cancer and considered to be of significance in the pathogenesis of cancer.(PMID: 29932212) The heterodimers bind to the core site of a number of enhancers and promoters, including murine leukemia virus, polyomavirus enhancer, T-cell receptor enhancers, LCK, IL3 and GM-CSF promoters.) It has calculated molecular weight around 22kDa.

## Lagerung

**Lagerungsbedingungen:**  
Bei -20°C lagern. Vor Licht schützen. Nach dem Versand ein Jahr stabil.

**Lagerungspuffer:**  
BS mit 50% Glycerin, 0,05% Proclin300, 0,5% BSA, pH 7,3.

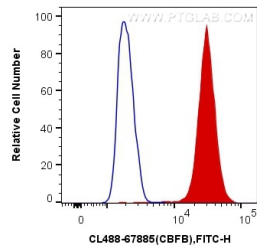
Aliquotieren ist nicht notwendig bei -20°C Lagerung

**\*\*\* 20ul-Größen enthalten 0.1% BSA**

For technical support and original validation data for this product please contact:  
T: 1 (888) 4PTGLAB (1-888-478-4522) (toll free in USA), or 1(312) 455-8498 (outside USA)  
E: proteintech@ptglab.com  
W: ptglab.com

This product is exclusively available under Proteintech Group brand and is not available to purchase from any other manufacturer.

## Ausgewählte Validierungsdaten



1X10<sup>6</sup> K-562 cells were intracellularly stained with 0.4 µg CoraLite® Plus 488 Anti-Human CBFB (CL488-67885, Clone:1D7F2) (red), or 0.4 µg Control Antibody. Cells were fixed with 4% PFA and permeabilized with Flow Cytometry Perm Buffer (PF00011-C).