

Allgemeine Informationen

Katalog-Nr.: CL488-67936	GenBank-Zugangsnummer: NM_014712	Reinigungsmethode: Protein-G-Reinigung
Größe: 100ul , Konzentration: 1000 µg/ml von9739	GeneID (NCBI): von9739	CloneNo.: 1C2G12
Nanodrop;	Vollständiger Name: SET domain containing 1A	Anregungs-/Emissionsmaxima-Wellenlängen: 493 nm / 522 nm
Wirt: Maus	Berechnete Masse: 186 kDa	
Isotyp: IgG1	Beobachtete Masse: 270 kDa	
Immunogen Katalognummer: AG30424		

Anwendungen

Geprüfte Anwendungen:
FC (Intra)

Getestete Reaktivität:
Human, Maus, Ratte

Hintergrundinformationen

SETD1A is a SET domain-containing methyltransferase involved in the epigenetic regulation of transcription(PMID:12670868). It is the main catalytic component of a multiprotein complex that methylates lysine 4 of histone H3, a histone mark associated with gene activation (PMID:29937342). Responsible for H3K4me3 enriched promoters and transcriptional programming of inner mass stem cells and neuron progenitors during embryogenesis (PMID:31197650). Does not methylate 'Lys-4' of histone H3 if the neighboring 'Lys-9' residue is already methylated (PubMed:12670868). SETD1A has a calculated molecular weight of 186 kDa, and a 258 kDa band was also reported (PMID: 31076518).

Lagerung

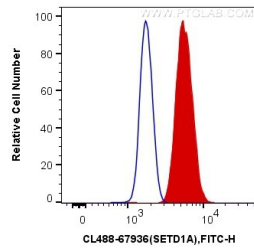
Lagerungsbedingungen:
Bei -20°C lagern. Vor Licht schützen. Nach dem Versand ein Jahr stabil.

Lagerungspuffer:
BS mit 50% Glycerin, 0,05% Proclin300, 0,5% BSA, pH 7,3.

Aliquotieren ist nicht notwendig bei -20°C Lagerung

***** 20ul-Größen enthalten 0.1% BSA**

Ausgewählte Validierungsdaten



1X10⁶ HEK-293 cells were intracellularly stained with 0.4 ug CoraLite® Plus 488 Anti-Human SETD1A (CL488-67936, Clone:1C2G12) (red), or 0.4 ug Control Antibody. Cells were fixed and permeabilized with Transcription Factor Staining Buffer Kit (PF00011).