

Nur für Forschungszwecke

IPO5 Monoklonaler Antikörper

Katalog-Nr.:CL488-67962



Allgemeine Informationen

Katalog-Nr.: CL488-67962	GenBank-Zugangsnummer: BC001497	Reinigungsmethode: Protein-G-Reinigung
Größe: 100ul , Konzentration: 1000 µg/ml von3843	GeneID (NCBI): 3843	CloneNo.: 1E2B9
Nanodrop;	Vollständiger Name: importin 5	Anregungs-/Emissionsmaxima-Wellenlängen: 493 nm / 522 nm
Wirt: Maus	Beobachtete Masse: 124 kDa	
Isotyp: IgG1		
Immunogen Katalognummer: AG30955		

Anwendungen

Geprüfte Anwendungen:
FC (Intra)

Getestete Reaktivität:
Human, Maus, Ratte

Hintergrundinformationen

IPO5 is a member of the importin beta family. Structurally, the protein adopts the shape of a right-hand solenoid and is composed of 24 HEAT repeats. IPO5 facilitates cytoplasmic polyadenylation element-binding protein CPEB3 translocation by binding to the RRM1 motif of CPEB3 in neurons. NMDAR signaling increases RanBP1 expression and reduces the level of cytoplasmic GTP-bound Ran. These changes enhance CPEB3-IPO5 interaction, which consequently accelerates the nuclear import of CPEB3 and promotes its nuclear function.

Lagerung

Lagerungsbedingungen:
Bei -20°C lagern. Vor Licht schützen. Nach dem Versand ein Jahr stabil.

Lagerungspuffer:
BS mit 50% Glycerin, 0,05% Proclin300, 0,5% BSA, pH 7,3.

Aliquotieren ist nicht notwendig bei -20°C Lagerung

***** 20ul-Größen enthalten 0.1% BSA**

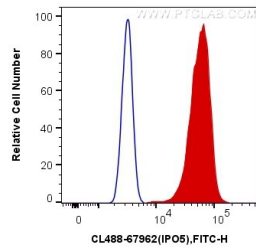
For technical support and original validation data for this product please contact:

T: 1 (888) 4PTGLAB (1-888-478-4522) (toll free in USA), or 1(312) 455-8498 (outside USA)

E: proteintech@ptglab.com
W: ptglab.com

This product is exclusively available under Proteintech Group brand and is not available to purchase from any other manufacturer.

Ausgewählte Validierungsdaten



1X10⁶ A431 cells were intracellularly stained with 0.4 ug CoraLite® Plus 488 Anti-Human IPO5 (CL488-67962, Clone:1E2B9) (red), or 0.4 ug Control Antibody. Cells were fixed and permeabilized with Transcription Factor Staining Buffer Kit (PF00011).