

Nur für Forschungszwecke

RALY Monoklonaler Antikörper

Katalog-Nr.:CL488-68011



Allgemeine Informationen

Katalog-Nr.: CL488-68011	GenBank-Zugangsnummer: BC103753	Reinigungsmethode: Protein-G-Reinigung
Größe: 100ul , Konzentration: 1000 µg/ml von22913 Nanodrop;	GeneID (NCBI): von22913	CloneNo.: 2B10C3
Wirt: Maus	Vollständiger Name: RNA binding protein, autoantigenic (hnRNP-associated with lethal yellow homolog (mouse))	Empfohlene Verdünnungen: IF 1:300-1:1200
Isotyp: IgG1	Berechnete Masse: 307 aa, 33 kDa	Anregungs-/Emissionsmaxima- Wellenlängen: 493 nm / 522 nm
Immunogen Katalognummer: AG12250	Beobachtete Masse: 37 kDa	

Anwendungen

Geprüfte Anwendungen: FC (Intra), IF	Positivkontrollen: IF : A431-Zellen,
Getestete Reaktivität: Human	

Hintergrundinformationen

RNA-binding protein RALY is a protein that in humans is encoded by the RALY gene. In infectious mononucleosis, anti-EBNA-1 antibodies are produced which cross-react with multiple normal human proteins. The cross-reactivity is due to anti-gly/ala antibodies that cross-react with host proteins containing configurations like those in the EBNA-1 repeat. One such antigen is RALY which is a member of the heterogeneous nuclear ribonucleoprotein gene family.

Lagerung

Lagerungsbedingungen:
Bei -20°C lagern. Vor Licht schützen. Nach dem Versand ein Jahr stabil.
Lagerungspuffer:
BS mit 50% Glycerin, 0,05% Proclin300, 0,5% BSA, pH 7,3.
Aliquotieren ist nicht notwendig bei -20°C Lagerung

***** 20ul-Größen enthalten 0.1% BSA**

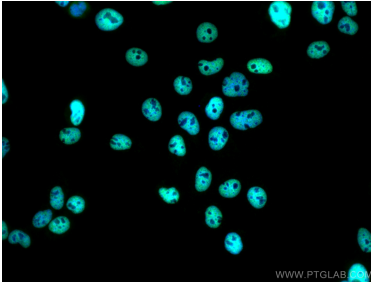
For technical support and original validation data for this product please contact:

T: 1 (888) 4PTGLAB (1-888-478-4522) (toll free
in USA), or 1(312) 455-8498 (outside USA)

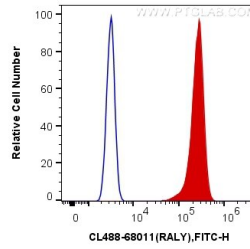
E: proteintech@ptglab.com
W: ptglab.com

This product is exclusively available under Proteintech Group brand and is not available to purchase from any other manufacturer.

Ausgewählte Validierungsdaten



Immunofluorescent analysis of (4% PFA) fixed A431 cells using CoraLite® Plus 488 RALY antibody (CL488-68011, Clone: 2B10C3) at dilution of 1:600.



1×10^6 A431 cells were intracellularly stained with 0.4 μ g CoraLite® Plus 488 Anti-Human RALY (CL488-68011, Clone: 2B10C3) (red), or 0.4 μ g Control Antibody. Cells were fixed and permeabilized with Transcription Factor Staining Buffer Kit (PF00011).