

Nur für Forschungszwecke

# CRMP1 Monoklonaler Antikörper

Katalog-Nr.:CL488-68021



## Allgemeine Informationen

Katalog-Nr.: CL488-68021	GenBank-Zugangsnummer: BC000252	Reinigungsmethode: Protein-A-Reinigung
Größe: 100ul , Konzentration: 1000 µg/ml von1400 Nanodrop;	GeneID (NCBI): von1400	CloneNo.: 2F4G5
Wirt: Maus	Vollständiger Name: collapsin response mediator protein 1	Anregungs-/Emissionsmaxima- Wellenlängen: 493 nm / 522 nm
Isotyp: IgG2a	Berechnete Masse: 62 kDa	
Immunogen Katalognummer: AG30090	Beobachtete Masse: 62 kDa	

## Anwendungen

**Geprüfte Anwendungen:**  
FC (Intra)

**Getestete Reaktivität:**  
Hausschwein, Huhn, Human, Kaninchen, Maus, Ratte

## Hintergrundinformationen

CRMP1 (Collapsin response mediator protein 1) is also named as DPYSL1, ULIP3, DRP-1 and belongs to the collapsin response mediator protein family, which are a family of five cytoplasmic proteins predominantly expressed in the developing nervous system. CRMP1, the predicted 62 kDa protein and its 74 kDa isoform corresponding to its N-terminal splice variant already described for embryonic, neonatal, and adult brain of the rat are evidenced in the cortex of adult mouse (PMID:15834957). This protein is involved in invasion, and aggressiveness of prolactin pituitary tumors.

## Lagerung

**Lagerungsbedingungen:**  
Bei -20°C lagern. Vor Licht schützen. Nach dem Versand ein Jahr stabil.

**Lagerungspuffer:**  
BS mit 50% Glycerin, 0,05% Proclin300, 0,5% BSA, pH 7,3.

Aliquotieren ist nicht notwendig bei -20°C Lagerung

**\*\*\* 20ul-Größen enthalten 0.1% BSA**

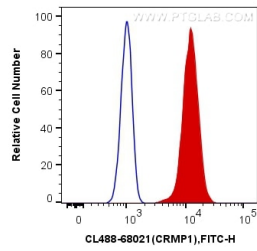
For technical support and original validation data for this product please contact:

T: 1 (888) 4PTGLAB (1-888-478-4522) (toll free  
in USA), or 1(312) 455-8498 (outside USA)

E: [proteintech@ptglab.com](mailto:proteintech@ptglab.com)  
W: [ptglab.com](http://ptglab.com)

**This product is exclusively available under Proteintech Group brand and is not available to purchase from any other manufacturer.**

## Ausgewählte Validierungsdaten



1X10<sup>6</sup> U2OS cells were intracellularly stained with 0.4 ug CoraLite® Plus 488 Anti-Human CRMP1 (CL488-68021, Clone:2F4G5) (red), or 0.4 ug Control Antibody. Cells were fixed with 4% PFA and permeabilized with Flow Cytometry Perm Buffer (PF00011-C).