

Nur für Forschungszwecke

SLC39A3 Monoklonaler Antikörper

Katalog-Nr.:CL488-68025



Allgemeine Informationen

Katalog-Nr.: CL488-68025	GenBank-Zugangsnummer: BC005869	Reinigungsmethode: Protein-A-Reinigung
Größe: 100ul, Konzentration: 1000 µg/ml von29985 Nanodrop;	GeneID (NCBI): von29985	CloneNo.: 1A11F6
Wirt: Maus	Vollständiger Name: solute carrier family 39 (zinc transporter), member 3	Anregungs-/Emissionsmaxima-Wellenlängen: 493 nm / 522 nm
Isotyp: IgG2a	Berechnete Masse: 314 aa, 34 kDa	
Immunogen Katalognummer: AG14289	Beobachtete Masse: 32 kDa	

Anwendungen

Geprüfte Anwendungen:
FC (Intra)

Getestete Reaktivität:
Human

Hintergrundinformationen

SLC39A3, also named as ZIP3, belongs to the ZIP transporter (TC 2.A.5) family. SLC39A3 is a Zn importer that acts as a zinc-influx transporter. SLC39A3 is highly expressed in a cell-type-specific manner in ovaries, testes, and the developing nervous system with limited expression in the small intestinal crypt cells, kidney glomerulus, and discrete regions of the liver. SLC39A3 is also expressed in highly specialized, hormonally responsive secretory tissues, such as the pancreas, prostate, and mammary gland (PMID: 19458277). SLC39A3 has 2 isoforms with the molecular mass of 11 and 34 kDa.

Lagerung

Lagerungsbedingungen:
Bei -20°C lagern. Vor Licht schützen. Nach dem Versand ein Jahr stabil.

Lagerungspuffer:
BS mit 50% Glycerin, 0,05% Proclin300, 0,5% BSA, pH 7,3.

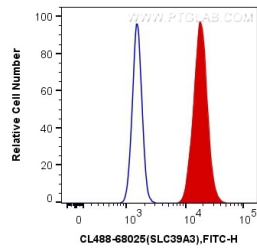
Aliquotieren ist nicht notwendig bei -20°C Lagerung

*** 20ul-Größen enthalten 0.1% BSA

For technical support and original validation data for this product please contact:
T: 1 (888) 4PTGLAB (1-888-478-4522) (toll free in USA), or 1(312) 455-8498 (outside USA) E: proteintech@ptglab.com W: ptglab.com

This product is exclusively available under Proteintech Group brand and is not available to purchase from any other manufacturer.

Ausgewählte Validierungsdaten



1X10⁶ A431 cells were intracellularly stained with 0.4 ug CoraLite® Plus 488 Anti-Human SLC39A3 (CL488-68025, Clone:1A11F6) (red), or 0.4 ug Mouse IgG2a Isotype Control (CL488-66360-2, Clone: K11A1B2A2) (blue). Cells were fixed with 4% PFA and permeabilized with Flow Cytometry Perm Buffer (PF00011-C).