

Allgemeine Informationen

Katalog-Nr.: CL488-68033	GenBank-Zugangsnummer: NM_000573	Reinigungsmethode: Protein-G-Reinigung
Größe: 100ul , Konzentration: 1000 µg/ml von1378 Nandrop;	GeneID (NCBI): 1378	CloneNo.: 1B8E6
Wirt: Maus	Vollständiger Name: complement component (3b/4b) receptor 1 (Knops blood group)	Empfohlene Verdünnungen: IF 1:50-1:500
Isotyp: IgG1	Berechnete Masse: 224 kDa	Anregungs-/Emissionsmaxima- Wellenlängen: 493 nm / 522 nm
Immunogen Katalognummer: AG30268		

Anwendungen

Geprüfte Anwendungen: IF	Positivkontrollen: IF : humanes Appendizitis-Gewebe,
Getestete Reaktivität: Human	

Hintergrundinformationen

Complement receptor type 1 (CR1), also known as C3b/C4b receptor or CD35, is a single-chain glycoprotein consisting of 30 repeating homologous protein domains known as short consensus repeats (~60 amino acids each) followed by transmembrane and cytoplasmic domains (PMID: 8765013). CR1 is variably expressed by granulocytes, monocytes, B cells, some T cells, erythrocytes, follicular dendritic cells, Langerhan cells and glomerular podocytes (PMID: 19004497). CR1 acts as a receptor for C3b and C4b and plays important roles in regulation of the complement cascade and clearance of immune complexes. A soluble form of CR1 (sCR1) has been found in plasma (PMID: 3156931). It has been reported that sCR1 is produced by a proteolytic cleavage in the C-terminal region of CR1 transmembrane domain (PMID: 9405292).

Lagerung

Lagerungsbedingungen:
Bei -20°C lagern. Vor Licht schützen. Nach dem Versand ein Jahr stabil.
Lagerungspuffer:
BS mit 50% Glycerin, 0,05% Proclin300, 0,5% BSA, pH 7,3.
Aliquotieren ist nicht notwendig bei -20°C Lagerung

***** 20ul-Größen enthalten 0.1% BSA**

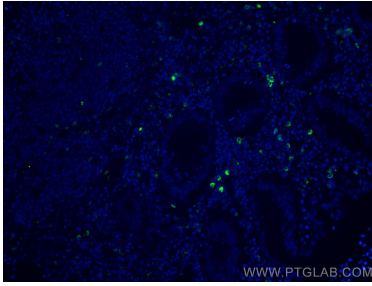
For technical support and original validation data for this product please contact:

T: 1 (888) 4PTGLAB (1-888-478-4522) (toll free
in USA), or 1(312) 455-8498 (outside USA)

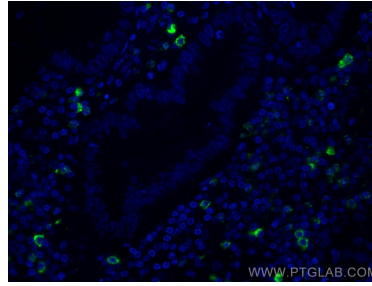
E: proteintech@ptglab.com
W: ptglab.com

This product is exclusively available under Proteintech Group brand and is not available to purchase from any other manufacturer.

Ausgewählte Validierungsdaten



Immunofluorescent analysis of (4% PFA) fixed human appendicitis tissue using CoraLite® Plus 488 CR1 antibody (CL488-68033, Clone: 1B8E6) at dilution of 1:200.



Immunofluorescent analysis of (4% PFA) fixed human appendicitis tissue using CoraLite® Plus 488 CR1 antibody (CL488-68033, Clone: 1B8E6) at dilution of 1:200.