

Nur für Forschungszwecke

RAB3A Monoklonaler Antikörper

Katalog-Nr.:CL488-68052



Allgemeine Informationen

Katalog-Nr.: CL488-68052	GenBank-Zugangsnummer: BC011782	Reinigungsmethode: Protein-A-Reinigung
Größe: 100ul, Konzentration: 1000 µg/ml von5864	GeneID (NCBI): 5864	CloneNo.: 1B12E9
Nanodrop;	Vollständiger Name: RAB3A, member RAS oncogene family	Anregungs-/Emissionsmaxima-Wellenlängen: 493 nm / 522 nm
Wirt: Maus	Berechnete Masse: 25 kDa	
Isotyp: IgG2b	Beobachtete Masse: 25 kDa	
Immunogen Katalognummer: AG8148		

Anwendungen

Geprüfte Anwendungen:
FC (Intra)

Getestete Reaktivität:
Hausschwein, Huhn, Human, Kaninchen, Maus, Ratte

Hintergrundinformationen

Rab3A is a small G-protein of the Rab family, that is implicated in vesicle fusion and regulated secretion, particularly in neurotransmitter release. Rab3 subfamily small G proteins (Rab3A, Rab3B, Rab3C, and Rab3D) control the regulated exocytosis in neuronal/secretory cells. Rab3A is the most abundant Rab GTPase in brain, where it is associated with synaptic vesicles. Rab3a is believed to modulate secretion efficiency by stimulating vesicle recruitment to sites of exocytosis and/ or by recruiting regulatory molecules to the docking/ fusion machinery.

Lagerung

Lagerungsbedingungen:
Bei -20°C lagern. Vor Licht schützen. Nach dem Versand ein Jahr stabil.

Lagerungspuffer:
BS mit 50% Glycerin, 0,05% Proclin300, 0,5% BSA, pH 7,3.

Aliquotieren ist nicht notwendig bei -20°C Lagerung

***** 20ul-Größen enthalten 0.1% BSA**

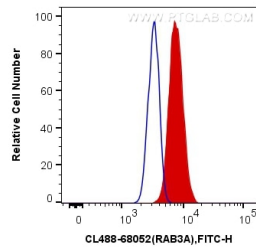
For technical support and original validation data for this product please contact:

T: 1 (888) 4PTGLAB (1-888-478-4522) (toll free in USA), or 1(312) 455-8498 (outside USA)

E: proteintech@ptglab.com
W: ptglab.com

This product is exclusively available under Proteintech Group brand and is not available to purchase from any other manufacturer.

Ausgewählte Validierungsdaten



1X10⁶ HeLa cells were intracellularly stained with 0.4 ug CoraLite® Plus 488 Anti-Human RAB3A (CL488-68052, Clone:1B12E9) (red), or 0.4 ug Mouse IgG2b Isotype Control (CL488-66360-3, Clone: K11B8C4B5) (blue). Cells were fixed with 4% PFA and permeabilized with Flow Cytometry Perm Buffer (PF00011-C).