

Nur für Forschungszwecke

# EEA1 Monoklonaler Antikörper

Katalog-Nr.:CL488-68065



## Allgemeine Informationen

<b>Katalog-Nr.:</b> CL488-68065	<b>GenBank-Zugangsnummer:</b> NM_003566	<b>Reinigungsmethode:</b> Protein-G-Reinigung
<b>Größe:</b> 100ul , Konzentration: 1000 µg/ml von8411 Nanodrop;	<b>GeneID (NCBI):</b> early endosome antigen 1	<b>CloneNo.:</b> 1E11E4
<b>Wirt:</b> Maus	<b>Vollständiger Name:</b> early endosome antigen 1	<b>Empfohlene Verdünnungen:</b> IF 1:50-1:500
<b>Isotyp:</b> IgG1	<b>Berechnete Masse:</b> 162 kDa	<b>Anregungs-/Emissionsmaxima- Wellenlängen:</b> 493 nm / 522 nm
<b>Immunogen Katalognummer:</b> AG28814	<b>Beobachtete Masse:</b> 162 kDa	

## Anwendungen

<b>Geprüfte Anwendungen:</b> FC (Intra), IF	<b>Positivkontrollen:</b> IF : HepG2-Zellen,
<b>Getestete Reaktivität:</b> Human, Maus, Ratte	

## Hintergrundinformationen

Early endosome antigen 1 (EEA1) is a marker of early endosomes and has an important role in endosomal trafficking. EEA1 contains coiled-coil regions and an FYVE-type zinc finger which interacts with phosphatidylinositol-3-phosphate. EEA1 functions as a Rab5 effector, mediates endosome docking and, together with SNAREs, leads to membrane fusion.

## Lagerung

**Lagerungsbedingungen:**  
Bei -20°C lagern. Vor Licht schützen.  
**Lagerungspuffer:**  
BS mit 50% Glycerin, 0,05% Proclin300, 0,5% BSA, pH 7,3.  
Aliquotieren ist nicht notwendig bei -20°C Lagerung

\*\*\* 20ul-Größen enthalten 0.1% BSA

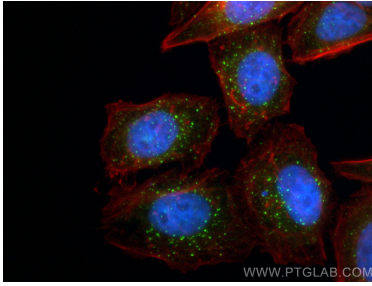
For technical support and original validation data for this product please contact:

T: 1 (888) 4PTGLAB (1-888-478-4522) (toll free  
in USA), or 1(312) 455-8498 (outside USA)

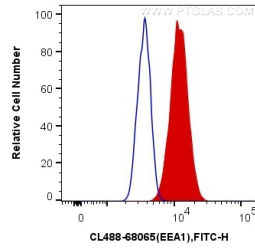
E: [proteintech@ptglab.com](mailto:proteintech@ptglab.com)  
W: [ptglab.com](http://ptglab.com)

This product is exclusively available under Proteintech Group brand and is not available to purchase from any other manufacturer.

## Ausgewählte Validierungsdaten



Immunofluorescent analysis of (4% PFA) fixed HepG2 cells using CoraLite® Plus 488 EEA1 antibody (CL488-68065, Clone: 1E11E4) at dilution of 1:200, CL594-Phalloidin (red).



$1 \times 10^6$  HeLa cells were intracellularly stained with 0.4  $\mu$ g CoraLite® Plus 488 Anti-Human EEA1 (CL488-68065, Clone: 1E11E4) (red), or 0.4  $\mu$ g Mouse IgG1 Isotype Control (CL488-66360, Clone: T1F8D3F10) (blue). Cells were fixed with 4% PFA and permeabilized with Flow Cytometry Perm Buffer (PF00011-C).