

Nur für Forschungszwecke

ARF1 Monoklonaler Antikörper

Katalog-Nr.:CL488-68069



Allgemeine Informationen

Katalog-Nr.: CL488-68069	GenBank-Zugangsnummer: BC009247	Reinigungsmethode: Protein-G-Reinigung
Größe: 100ul , Konzentration: 1000 µg/ml von375 Nanodrop;	GeneID (NCBI): Vollständiger Name: ADP-ribosylation factor 1	CloneNo.: 1C10E3
Wirt: Maus	Berechnete Masse: 21 kDa	Empfohlene Verdünnungen: IF 1:50-1:500
Isotyp: IgG1	Beobachtete Masse: 18-21 kDa	Anregungs-/Emissionsmaxima- Wellenlängen: 493 nm / 522 nm
Immunogen Katalognummer: AG28021		

Anwendungen

Geprüfte Anwendungen: FC (Intra), IF	Positivkontrollen: IF : HeLa-Zellen,
Getestete Reaktivität: Human, Kaninchen, Maus, Ratte	

Hintergrundinformationen

ADP-ribosylation factors (ARFs) are members of the ARF family of GTP-binding proteins of the Ras superfamily. ARFs bind and regulate GTP/GDP cycle by alternating between the active GTP-bound and inactive GDP-bound conformations. ARF family proteins are essential and ubiquitous in eukaryotes. Six highly conserved members of the family have been identified in mammalian cells. They function in vesicular traffic and actin remodelling and other bioprocesses in cells. The ARF1 protein is localized to the Golgi apparatus and has a central role in intra-Golgi transport. It mainly functions in coat recruitment.(PMID: 7759471, PMID: 16042562).

Lagerung

Lagerungsbedingungen:
Bei -20°C lagern. Vor Licht schützen. Nach dem Versand ein Jahr stabil.
Lagerungspuffer:
BS mit 50% Glycerin, 0,05% Proclin300, 0,5% BSA, pH 7,3.
Aliquotieren ist nicht notwendig bei -20°C Lagerung

***** 20ul-Größen enthalten 0.1% BSA**

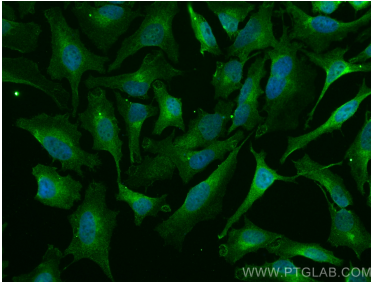
For technical support and original validation data for this product please contact:

T: 1 (888) 4PTGLAB (1-888-478-4522) (toll free
in USA), or 1(312) 455-8498 (outside USA)

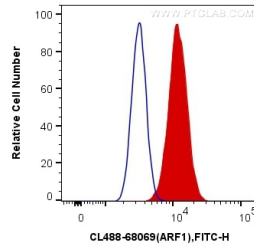
E: proteintech@ptglab.com
W: ptglab.com

This product is exclusively available under Proteintech Group brand and is not available to purchase from any other manufacturer.

Ausgewählte Validierungsdaten



Immunofluorescent analysis of (4% PFA) fixed HeLa cells using CoraLite® Plus 488 ARF1 antibody (CL488-68069, Clone: 1C10E3) at dilution of 1:200.



1X10⁶ HeLa cells were intracellularly stained with 0.4 ug CoraLite® Plus 488 Anti-Human ARF1 (CL488-68069, Clone:1C10E3) (red), or 0.4 ug Mouse IgG1 Isotype Control (CL488-66360, Clone: T1F8D3F10) (blue). Cells were fixed with 4% PFA and permeabilized with Flow Cytometry Perm Buffer (PF00011-C).