

Nur für Forschungszwecke

# GPSM1 Monoklonaler Antikörper

Katalog-Nr.:CL488-68233



## Allgemeine Informationen

<b>Katalog-Nr.:</b> CL488-68233	<b>GenBank-Zugangsnummer:</b> BC017353	<b>Reinigungsmethode:</b> Protein-G-Reinigung
<b>Größe:</b> 100ul , Konzentration: 1000 µg/ml von26086 Nanodrop;	<b>GeneID (NCBI):</b> Vollständiger Name: G-protein signaling modulator 1 (AGS3-like, C. elegans)	<b>CloneNo.:</b> 3A7A2
<b>Wirt:</b> Maus	<b>Berechnete Masse:</b> 652 aa, 72 kDa	<b>Empfohlene Verdünnungen:</b> IF 1:50-1:500
<b>Isotyp:</b> IgG1	<b>Beobachtete Masse:</b> 75 kDa	<b>Anregungs-/Emissionsmaxima- Wellenlängen:</b> 493 nm / 522 nm
<b>Immunogen Katalognummer:</b> AG18773		

## Anwendungen

<b>Geprüfte Anwendungen:</b> IF	<b>Positivkontrollen:</b> IF : A431-Zellen,
<b>Getestete Reaktivität:</b> Human, Maus	

## Hintergrundinformationen

GPSM1, also named as AGS3, is a receptor-independent G protein activator that has been implicated in multiple biological events such as brain development, neuroplasticity and addiction, cardiac function, Golgi structure/function, macroautophagy and metabolism. It contains seven tetratricopeptide repeats in its N-terminal half and four G-protein regulatory (GPR) motifs in its C-terminal half. It has been shown that AGS3 could regulate the orientation of the mitotic spindle, cAMP production, membrane protein transport, and asymmetric cell division by binding preferentially to inactive Gai/o subunits complexed with guanine dinucleotide phosphate (GDP) at multiple G-protein regulatory or GoLoco motif repeats. It also plays an important anti-apoptotic role through enhancing the phosphorylation of cyclic AMP response element-binding protein (p-CREB).

## Lagerung

**Lagerungsbedingungen:**  
Bei -20°C lagern. Vor Licht schützen. Nach dem Versand ein Jahr stabil.  
**Lagerungspuffer:**  
BS mit 50% Glycerin, 0,05% Proclin300, 0,5% BSA, pH 7,3.  
**Aliquotieren ist nicht notwendig bei -20°C Lagerung**

**\*\*\* 20ul-Größen enthalten 0.1% BSA**

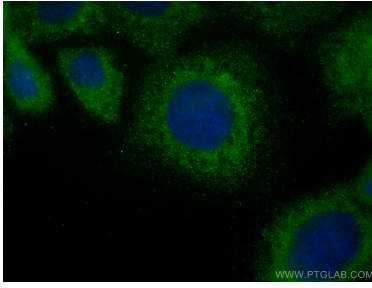
For technical support and original validation data for this product please contact:

T: 1 (888) 4PTGLAB (1-888-478-4522) (toll free  
in USA), or 1(312) 455-8498 (outside USA)

E: [proteintech@ptglab.com](mailto:proteintech@ptglab.com)  
W: [ptglab.com](http://ptglab.com)

**This product is exclusively available under Proteintech Group brand and is not available to purchase from any other manufacturer.**

## Ausgewählte Validierungsdaten



Immunofluorescent analysis of (-20°C Methanol) fixed A431 cells using Coralite® Plus 488 GP5M1 antibody (CL488-68233, Clone: 3A7A2 ) at dilution of 1:200.