

Nur für Forschungszwecke

smooth muscle actin specific Rekombinanter Antikörper



Katalog-Nr.:CL488-80008

Allgemeine Informationen

Katalog-Nr.: CL488-80008	GenBank-Zugangsnummer: NM_001613	Reinigungsmethode: Protein-A-Reinigung
Größe: 100ul, Konzentration: 1000 µg/ml von59 Nanodrop;	GeneID (NCBI): 59	CloneNo.: 5H7
Wirt: Kaninchen	Vollständiger Name: actin, alpha 2, smooth muscle, aorta	Empfohlene Verdünnungen: IF 1:50-1:500
Isotyp: IgG	Berechnete Masse: 42 kDa	Anregungs-/Emissionsmaxima- Wellenlängen: 493 nm / 522 nm
	Beobachtete Masse: 42 kDa	

Anwendungen

Geprüfte Anwendungen: FC (Intra), IF	Positivkontrollen: IF : Mausherzgewebe,
Getestete Reaktivität: Hausschwein, Huhn, Human, Maus, Ratte	

Hintergrundinformationen

ACTA2 (also known as α -smooth muscle actin or α -SMA) belongs to the actin family. Actins are highly conserved proteins that are involved in various types of cell motility and are ubiquitously expressed in all eukaryotic cells. ACTA2 is primarily expressed in vascular smooth muscle and anti-ACTA2 is commonly used to marker smooth muscle cells.

Lagerung

Lagerungsbedingungen:
Bei -20°C lagern. Vor Licht schützen. Nach dem Versand ein Jahr stabil.
Lagerungspuffer:
BS mit 50% Glycerin, 0,05% Proclin300, 0,5% BSA, pH 7,3.
Aliquotieren ist nicht notwendig bei -20°C Lagerung

*** 20ul-Größen enthalten 0.1% BSA

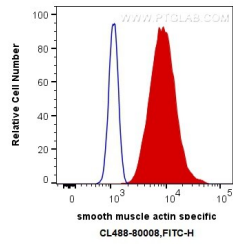
For technical support and original validation data for this product please contact:

T: 1 (888) 4PTGLAB (1-888-478-4522) (toll free
in USA), or 1(312) 455-8498 (outside USA)

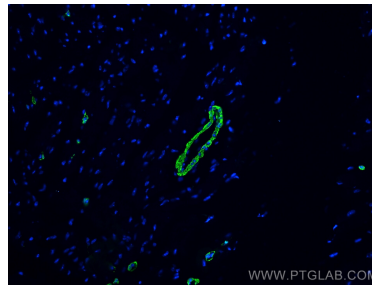
E: proteintech@ptglab.com
W: ptglab.com

This product is exclusively available under Proteintech Group brand and is not available to purchase from any other manufacturer.

Ausgewählte Validierungsdaten



1X10⁶ C2C12 cells were intracellularly stained with 0.4 ug CoraLite® Plus 488 Anti-Human smooth muscle actin specific (CL488-80008, Clone:5H7) (red), or 0.4 ug Control Antibody. Cells were fixed with 4% PFA and permeabilized with Flow Cytometry Perm Buffer (PF00011-C).



Immunofluorescent analysis of (4% PFA) fixed mouse heart tissue using CoraLite® Plus 488 smooth muscle actin specific antibody (CL488-80008, Clone: 5H7) at dilution of 1:200.



Immunofluorescent analysis of (4% PFA) fixed mouse heart tissue using CoraLite® Plus 488 smooth muscle actin specific antibody (CL488-80008, Clone: 5H7) at dilution of 1:200.