

Nur für Forschungszwecke

Phospho-RPS6KA1 (Ser380) Rekombinanter Antikörper



Katalog-Nr.:CL488-80108

Allgemeine Informationen

Katalog-Nr.: CL488-80108	GenBank-Zugangsnummer: BC014966	Reinigungsmethode: Protein-A-Reinigung
Größe: 100ul, Konzentration: 1000 µg/ml von6195	GeneID (NCBI): von6195	CloneNo.: 7F23
Nanodrop;	Vollständiger Name: ribosomal protein S6 kinase, 90kDa, polypeptide 1	Anregungs-/Emissionsmaxima-Wellenlängen: 493 nm / 522 nm
Wirt: Kaninchen	Berechnete Masse: 735 aa, 83 kDa	
Isotyp: IgG	Beobachtete Masse: 83-90 kDa	

Anwendungen

Geprüfte Anwendungen:
FC (Intra)

Getestete Reaktivität:
Human, Maus

Hintergrundinformationen

The 90 kDa ribosomal S6 kinases (RSK1-4) are a family of widely expressed serine/threonine kinases and play an important role in the MAPK signaling cascade and act downstream of ERK1/2 signaling. It can mediate mitogenic and stress-induced activation of the transcription factors CREB1, ETV1/ER81 and NR4A1/NUR77. RSK1 (RPS6KA1) is also designated as p90RSK associated with cellular proliferation, survival and differentiation. It has been reported that the phosphorylation of RPS6KA1 at Ser380 is involved in autophosphorylation by activation of the C-terminal kinase domain. (PMID: 16458888, 30813401, 17259979, 10679322)

Lagerung

Lagerungsbedingungen:
Bei -20°C lagern. Vor Licht schützen.

Lagerungspuffer:
BS mit 50% Glycerin, 0,05% Proclin300, 0,5% BSA, pH 7,3.

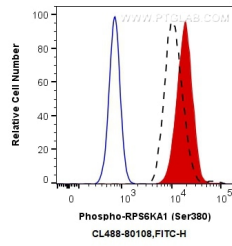
Aliquotieren ist nicht notwendig bei -20°C Lagerung

***** 20ul-Größen enthalten 0.1% BSA**

For technical support and original validation data for this product please contact:
T: 1 (888) 4PTGLAB (1-888-478-4522) (toll free in USA), or 1(312) 455-8498 (outside USA)
E: proteintech@ptglab.com
W: ptglab.com

This product is exclusively available under Proteintech Group brand and is not available to purchase from any other manufacturer.

Ausgewählte Validierungsdaten



1X10⁶ Jurkat cells untreated (dashed lines) or treated with TPA (red) were intracellularly stained with 0.13 ug CoraLite® Plus 488 Anti-Human Phospho-RPS6KA1 (Ser380) (CL488-80108, Clone:7F23), or 0.13 ug Control Antibody (blue). Cells were fixed with 4% PFA and permeabilized with 90% MeOH.