

Allgemeine Informationen

Katalog-Nr.: CL488-81115	GenBank-Zugangsnummer: BC002409	Reinigungsmethode: Protein-A-Reinigung
Größe: 100ul , Konzentration: 1000 µg/ml von60 Nanodrop;	GeneID (NCBI): actin, beta	CloneNo.: 4H1
Wirt: Kaninchen	Vollständiger Name: actin, beta	Empfohlene Verdünnungen: IF 1:50-1:500
Isotyp: IgG	Berechnete Masse: 375 aa, 42 kDa	Anregungs-/Emissionsmaxima- Wellenlängen: 493 nm / 522 nm
Immunogen Katalognummer: AG14521	Beobachtete Masse: 42 kDa	

Anwendungen

Geprüfte Anwendungen: IF	Positivkontrollen: IF : MDCK-Zellen,
Getestete Reaktivität: Hausschwein, Human, Hund, Maus, Ratte	

Hintergrundinformationen

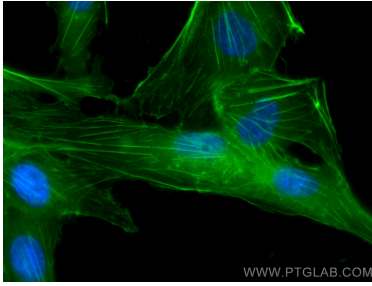
Beta Actin, also named as ACTB and F-Actin, belongs to the actin family. Actins are highly conserved globular proteins that are involved in various types of cell motility and are ubiquitously expressed in all eukaryotic cells. At least six isoforms of actins are known in mammals and other vertebrates: alpha (ACTC1, cardiac muscle 1), alpha 1 (ACTA1, skeletal muscle) and 2 (ACTA2, aortic smooth muscle), beta (ACTB), gamma 1 (ACTG1) and 2 (ACTG2, enteric smooth muscle). Beta and gamma 1 are two non-muscle actin proteins. Most actins consist of 376aa, while ACTG2 (rich in muscles) has 375aa and ACTG1(found in non-muscle cells) has only 374aa. Beta actin has been widely used as the internal control in RT-PCR and Western Blotting as a 42-kDa protein. However, the 37-40, 31, 15 kDa cleaved fragment of beta actin can be generated during apoptosis process. This antibody was generated against N-terminal region of human beta actin protein and can cross-react with other actins. (9173887, 11217076, 10229193)

Lagerung

Lagerungsbedingungen:
Bei -20°C lagern. Vor Licht schützen. Nach dem Versand ein Jahr stabil.
Lagerungspuffer:
BS mit 50% Glycerin, 0,05% Proclin300, 0,5% BSA, pH 7,3.
Aliquotieren ist nicht notwendig bei -20°C Lagerung

***** 20ul-Größen enthalten 0.1% BSA**

Ausgewählte Validierungsdaten



Immunofluorescent analysis of (-20°C Methanol) fixed MDCK cells using CoraLite® Plus 488 Beta Actin antibody (CL488-81115, Clone: 4H1) at dilution of 1:200.