

Allgemeine Informationen

Katalog-Nr.: CL555-10853	GenBank-Zugangsnummer: BC013867	Reinigungsmethode: Antigen-Affinitätsreinigung
Größe: 100ul , Konzentration: 1000 µg/ml von23022	GeneID (NCBI): von23022	Empfohlene Verdünnungen: IF 1:50-1:500
Nanodrop;	Vollständiger Name: palladin, cytoskeletal associated protein	Anregungs-/Emissionsmaxima-Wellenlängen: 557 nm / 570nm
Wirt: Kaninchen	Berechnete Masse: 1383 aa, 151 kDa	
Isotyp: IgG	Beobachtete Masse: 95 kDa, 140 kDa	
Immunogen Katalognummer: AG1288		

Anwendungen

Geprüfte Anwendungen: FC (Intra), IF	Positivkontrollen: IF : Maushodengewebe,
Getestete Reaktivität: Human, Maus	

Hintergrundinformationen

Palladin is an actin associated protein serving as a cytoskeleton scaffold, and actin cross linker, localizing at stress fibers, focal adhesions, and other actin based structures. Palladin exists as multiple isoforms through alternative transcription initiation sites and splicing. There are three major isoforms (200, 140, 90-92 kDa) and multiple minor isoforms. Different palladin isoforms are expressed in a tissue-specific pattern during development and in adult organs: the 200 kDa isoform is predominantly expressed in the heart, skeletal muscle, testis and bone; the 140 kDa isoform is widely expressed with the exception of liver, muscle, and skin; the 90-92 kDa isoform is broadly expressed in embryonic tissues and highly expressed in adult smooth muscle tissues (21455759). Recently overexpression of palladin has been linked to the promoted invasive motility in several types of cancers (18978809, 22291919). The 85-90 kDa palladin isoform has been observed predominantly expressed in pancreatic ductal adenocarcinoma (PDA) while a 65 kDa isoform is expressed in normal pancreas and non-PDA tumors (20436683). This antibody, generated against the fragment 999-1383aa of palladin, recognizes most isoforms of this protein, except isoform 6.

Lagerung

Lagerungsbedingungen:
Bei -20°C lagern. Vor Licht schützen.
Lagerungspuffer:
BS mit 50% Glycerin, 0,05% Proclin300, 0,5% BSA, pH 7,3.
Aliquotieren ist nicht notwendig bei -20°C Lagerung

***** 20ul-Größen enthalten 0.1% BSA**

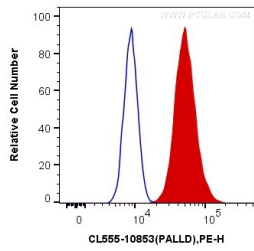
For technical support and original validation data for this product please contact:

T: 1 (888) 4PTGLAB (1-888-478-4522) (toll free in USA), or 1(312) 455-8498 (outside USA)

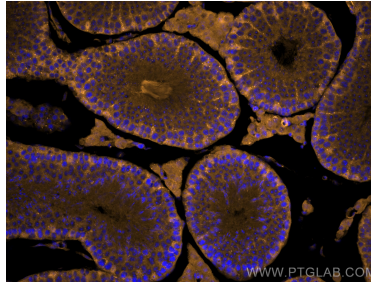
E: proteintech@ptglab.com
W: ptglab.com

This product is exclusively available under Proteintech Group brand and is not available to purchase from any other manufacturer.

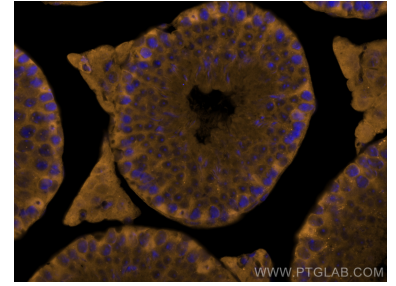
Ausgewählte Validierungsdaten



1X10⁶ HeLa cells were intracellularly stained with 0.4 ug Coralite®555 Anti-Human Palladin (CL555-10853) (red), or 0.4 ug Control Antibody. Cells were fixed with 4% PFA and permeabilized with Flow Cytometry Perm Buffer (PF00011-C).



Immunofluorescent analysis of (4% PFA) fixed mouse testis tissue using Coralite®555 Palladin antibody (CL555-10853) at dilution of 1:200.



Immunofluorescent analysis of (4% PFA) fixed mouse testis tissue using Coralite®555 Palladin antibody (CL555-10853) at dilution of 1:200.