

Nur für Forschungszwecke

# MECP2 Polyklonaler Antikörper

Katalog-Nr.:CL555-10861

Vorgestelltes Produkt



## Allgemeine Informationen

<b>Katalog-Nr.:</b> CL555-10861	<b>GenBank-Zugangsnummer:</b> BC011612	<b>Reinigungsmethode:</b> Antigen-affinitätsgereinigt
<b>Größe:</b> 100ul , Konzentration: 1000 µg/ml von4204 Nanodrop;	<b>GeneID (NCBI):</b> methyl CpG binding protein 2 (Rett syndrome)	<b>Empfohlene Verdünnungen:</b> IF 1:50-1:500
<b>Wirt:</b> Kaninchen	<b>Vollständiger Name:</b> methyl CpG binding protein 2 (Rett syndrome)	<b>Anregungs-/Emissionsmaxima-Wellenlängen:</b> 557 nm / 570nm
<b>Isotyp:</b> IgG	<b>Berechnete Masse:</b> 52 kDa, 53 kDa	
<b>Immunogen Katalognummer:</b> AG1309	<b>Beobachtete Masse:</b> 75 kDa	

## Anwendungen

<b>Geprüfte Anwendungen:</b> FC (Intra), IF	<b>Positivkontrollen:</b> IF : HepG2-Zellen,
<b>Getestete Reaktivität:</b> Human, Maus	

## Hintergrundinformationen

METHYL-CpG-BINDING PROTEIN 2(MECP2), is a chromatin-associated protein that can both activate and repress transcription. Mecp2 in the adult mouse is high in the brain, lung, and spleen, lower in heart and kidney. MECP2 takes part in the control of neuronal activity-dependent gene regulation, and this process may underlie the pathology of Rett syndrome, a severe developmental disorder with autistic phenotypes. As compared to wild-type monkeys, MECP2 transgenic monkeys exhibited a higher frequency of repetitive circular locomotion and increased stress responses, as measured by the threat-related anxiety and defensive test. Chromosomal protein that binds to methylated DNA. It can bind specifically to a single methyl-CpG pair. It is not influenced by sequences flanking the methyl-CpGs. Mediates transcriptional repression through interaction with histone deacetylase and the corepressor SIN3A. Two isoforms of MECP2 exist due to alternative splicing events. This antibody reacts with the MECP2 and phosphorylated MECP2 proteins. The calculated molecular weight of MECP2 is a 52 kDa, but the post-modified MECP2 protein is about 75-80 kDa (PMID: 12160743).

## Lagerung

**Lagerungsbedingungen:**  
Bei -20°C lagern. Vor Licht schützen.  
**Lagerungspuffer:**  
BS mit 50% Glycerin, 0,05% Proclin300, 0,5% BSA, pH 7,3.  
**Aliquotieren ist nicht notwendig bei -20°C Lagerung**

\*\*\* 20ul-Größen enthalten 0.1% BSA

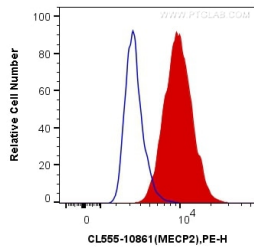
For technical support and original validation data for this product please contact:

T: 1 (888) 4PTGLAB (1-888-478-4522) (toll free in USA), or 1(312) 455-8498 (outside USA)

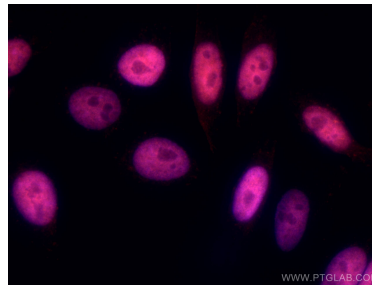
E: [proteintech@ptglab.com](mailto:proteintech@ptglab.com)  
W: [ptglab.com](http://ptglab.com)

This product is exclusively available under Proteintech Group brand and is not available to purchase from any other manufacturer.

## Ausgewählte Validierungsdaten



$1 \times 10^6$  NIH/3T3 cells were intracellularly stained with 0.2  $\mu$ g CoraLite®555 Anti-Human MECP2 (CL555-10861) (red), or 0.2  $\mu$ g Control Antibody. Cells were fixed and permeabilized with Transcription Factor Staining Buffer Kit (PF00011).



Immunofluorescent analysis of (4% PFA) fixed HepG2 cells using CoraLite®555 MECP2 antibody (CL555-10861) at dilution of 1:100.