

Nur für Forschungszwecke

# GOLGA2/GM130 Polyklonaler Antikörper

Katalog-Nr.:CL555-11308



## Allgemeine Informationen

<b>Katalog-Nr.:</b> CL555-11308	<b>GenBank-Zugangsnummer:</b> BC014188	<b>Reinigungsmethode:</b> Antigen-Affinitätsreinigung
<b>Größe:</b> 100ul , Konzentration: 1000 µg/ml von2801 Nanodrop;	<b>GeneID (NCBI):</b> golgi autoantigen, golgin subfamily a, 2	<b>Empfohlene Verdünnungen:</b> IF 1:50-1:500
<b>Wirt:</b> Kaninchen	<b>Vollständiger Name:</b> golgi autoantigen, golgin subfamily a, 2	<b>Anregungs-/Emissionsmaxima- Wellenlängen:</b> 557 nm / 570nm
<b>Isotyp:</b> IgG	<b>Berechnete Masse:</b> 111 kDa	
<b>Immunogen Katalognummer:</b> AG1848	<b>Beobachtete Masse:</b> 130 kDa	

## Anwendungen

<b>Geprüfte Anwendungen:</b> FC (Intra), IF	<b>Positivkontrollen:</b> IF : HepG2-Zellen, HeLa-Zellen
<b>Getestete Reaktivität:</b> Human, Hund	

## Hintergrundinformationen

GOLGA2, also known as GM130, is a 130 kDa cis-Golgi matrix protein which is one component of the detergent and salt resistant Golgi matrix. It is a peripheral membrane protein highly bound to Golgi membrane and localized mainly at the cytoplasmic face of cis-Golgi membrane. Together with its interacting partner proteins, including p115, giantin, GRASP65, and Rab GTPase, GOLGA2/GM130 is involved in the regulation of ER-to-Golgi transport and also in the maintenance of the Golgi structure. Emerging evidence suggest that the GOLGA2/GM130 has potential roles in the control of glycosylation, cell cycle progression, and higher order cell functions such as cell polarization and directed cell migration. (PMID: 20197635)

## Lagerung

**Lagerungsbedingungen:**  
Bei -20°C lagern. Vor Licht schützen. Nach dem Versand ein Jahr stabil.  
**Lagerungspuffer:**  
BS mit 50% Glycerin, 0,05% Proclin300, 0,5% BSA, pH 7,3.  
Aliquotieren ist nicht notwendig bei -20°C Lagerung

**\*\*\* 20ul-Größen enthalten 0.1% BSA**

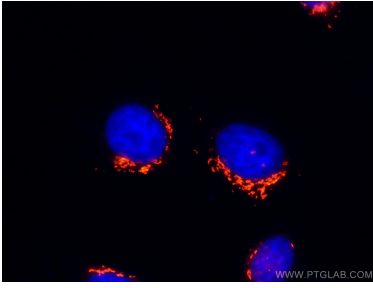
For technical support and original validation data for this product please contact:

T: 1 (888) 4PTGLAB (1-888-478-4522) (toll free  
in USA), or 1(312) 455-8498 (outside USA)

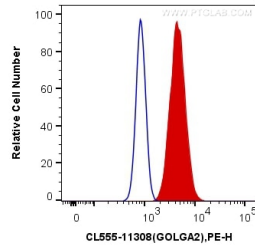
E: [proteintech@ptglab.com](mailto:proteintech@ptglab.com)  
W: [ptglab.com](http://ptglab.com)

**This product is exclusively available under Proteintech Group brand and is not available to purchase from any other manufacturer.**

## Ausgewählte Validierungsdaten



Immunofluorescent analysis of (4% PFA) fixed HepG2 cells using CoraLite@555 GOLGA2/GM130 antibody (CL555-11308) at dilution of 1:200.



1X10<sup>6</sup> HepG2 cells were intracellularly stained with 0.4 ug CoraLite@555 Anti-Human GOLGA2/GM130 (CL555-11308) (red), or 0.4 ug Control Antibody. Cells were fixed with 4% PFA and permeabilized with Flow Cytometry Perm Buffer (PF00011-C).