

Nur für Forschungszwecke

ASGR1 Polyklonaler Antikörper

Katalog-Nr.:CL555-11739

Vorgestelltes Produkt



Allgemeine Informationen

Katalog-Nr.:

CL555-11739

Größe:

100ul , Konzentration: 1000 µg/ml von432

Nanodrop;

Wirt:

Kaninchen

Isotyp:

IgG

Immunogen Katalognummer:

AG2310

GenBank-Zugangsnummer:

BC032130

GeneID (NCBI):

432

Vollständiger Name:

asialoglycoprotein receptor 1

Berechnete Masse:

291 aa, 33 kDa

Reinigungsmethode:

Antigen-Affinitätsreinigung

Empfohlene Verdünnungen:

IF 1:50-1:500

Anregungs-/Emissionsmaxima-

Wellenlängen:

557 nm / 570nm

Anwendungen

Geprüfte Anwendungen:

FC(Intra), IF

Getestete Reaktivität:

Human, Maus, Ratte

Positivkontrollen:

IF : humanes Leberkarzinomgewebe,

Hintergrundinformationen

Asialoglycoprotein receptor (ASGPR), also known as the hepatic galactose/N-acetylglucosamine (GlcNAc) receptor or Ashwell receptor, is a C-type lectin expressed exclusively in hepatic parenchymal cells. ASGPR consists of two subunits, a major subunit (ASGR1, HL-1) and a minor subunit (ASGR2, HL-2), and specifically recognizes terminal β -linked galactose or GlcNAc on circulating glycoproteins or cells. This receptor plays a critical role in serum glycoprotein homeostasis by mediating the endocytosis and lysosomal degradation of glycoproteins that contain terminal galactose or GlcNAc residues. ASGPR may facilitate hepatic infection by multiple viruses including hepatitis B, and is also a target for liver-specific drug delivery.

Lagerung

Lagerungsbedingungen:

Bei -20°C lagern. Vor Licht schützen. Nach dem Versand ein Jahr stabil.

Lagerungspuffer:

BS mit 50% Glycerin, 0,05% Proclin300, 0,5% BSA, pH 7,3.

Aliquotieren ist nicht notwendig bei -20°C Lagerung

*** 20ul-Größen enthalten 0.1% BSA

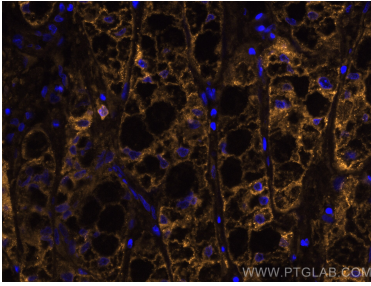
For technical support and original validation data for this product please contact:

T: 1 (888) 4PTGLAB (1-888-478-4522) (toll free in USA), or 1(312) 455-8498 (outside USA)

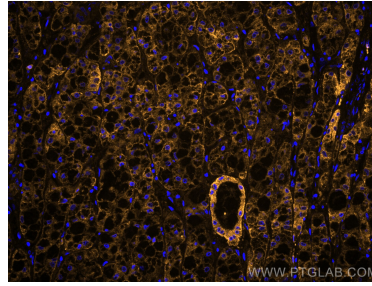
E: proteintech@ptglab.com
W: ptglab.com

This product is exclusively available under Proteintech Group brand and is not available to purchase from any other manufacturer.

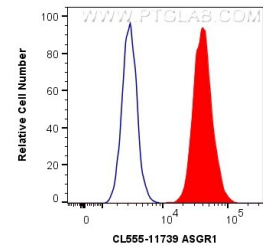
Ausgewählte Validierungsdaten



Immunofluorescent analysis of (4% PFA) fixed human liver cancer tissue using CoraLite@555 ASGR1 antibody (CL555-11739) at dilution of 1:200.



Immunofluorescent analysis of (4% PFA) fixed human liver cancer tissue using CoraLite@555 ASGR1 antibody (CL555-11739) at dilution of 1:200.



1X10⁶ HepG2 cells were intracellularly stained with 0.4 ug CoraLite@555 Anti-Human ASGR1 (CL555-11739) (red), or 0.4 ug Control Antibody. Cells were fixed with 4% PFA and permeabilized with Flow Cytometry Perm Buffer (PF00011-C).