

Nur für Forschungszwecke

Apolipoprotein A1 Polyklonaler Antikörper



Katalog-Nr.:CL555-14427

Allgemeine Informationen

| | | |
|---|---|---|
| Katalog-Nr.: CL555-14427 | GenBank-Zugangsnummer: BC005380 | Reinigungsmethode: Antigen-Affinitätsreinigung |
| Größe: 100ul , Konzentration: 1000 µg/ml von335 Nanodrop; | GeneID (NCBI): Vollständiger Name: apolipoprotein A-I | Anregungs-/Emissionsmaxima- Wellenlängen: 554 nm / 570 nm |
| Wirt: Kaninchen | Berechnete Masse: 31 kDa | |
| Isotyp: IgG | Beobachtete Masse: 26-30 kDa | |
| Immunogen Katalognummer: AG5793 | | |

Anwendungen

Geprüfte Anwendungen:
FC (Intra)

Getestete Reaktivität:
Human, Maus

Hintergrundinformationen

ApoA1 is a major protein component of high density lipoproteins (HDL) which is associated with reversed cholesterol transport, lipid/cholesterol binding, lecithin/cholesterol acyltransferase (LCAT) activation and specific receptors binding. It is synthesized in the liver and small intestine. Defects of ApoA1 cause low HDL level and systemic non-neuropathic amyloidosis. Serum concentration of ApoA1 is inversely related to the risk of developing atherosclerosis. This antibody was generated against the C-terminal region of human ApoA1.

Lagerung

Lagerungsbedingungen:
Bei -20°C lagern. Vor Licht schützen. Nach dem Versand ein Jahr stabil.

Lagerungspuffer:
BS mit 50% Glycerin, 0,05% Proclin300, 0,5% BSA, pH 7,3.

Aliquotieren ist nicht notwendig bei -20°C Lagerung

*** 20ul-Größen enthalten 0.1% BSA

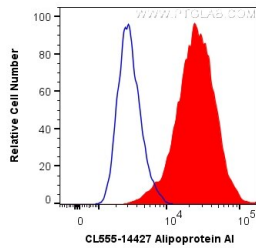
For technical support and original validation data for this product please contact:

T: 1 (888) 4PTGLAB (1-888-478-4522) (toll free
in USA), or 1(312) 455-8498 (outside USA)

E: proteintech@ptglab.com
W: ptglab.com

This product is exclusively available under Proteintech Group brand and is not available to purchase from any other manufacturer.

Ausgewählte Validierungsdaten



1X10⁶ HepG2 cells were intracellularly stained with 0.2 ug CoraLite® Plus 555 Anti-Human Apolipoprotein AI (CL555-14427) (red), or 0.2 ug CoraLite® Plus 555 Rabbit IgG Control Antibody (CL555-30000) (Blue). Cells were fixed with 4% PFA and permeabilized with Flow Cytometry Perm Buffer (PF00011-C).