

Nur für Forschungszwecke

# HLA class I ABC Polyklonaler Antikörper

Katalog-Nr.:CL555-15240



## Allgemeine Informationen

<b>Katalog-Nr.:</b> CL555-15240	<b>GenBank-Zugangsnummer:</b> BC003069	<b>Reinigungsmethode:</b> Antigen-Affinitätsreinigung
<b>Größe:</b> 100ul , Konzentration: 1000 µg/ml von3105 Nanodrop;	<b>GeneID (NCBI):</b> 3105	<b>Empfohlene Verdünnungen:</b> IF 1:50-1:500
<b>Wirt:</b> Kaninchen	<b>Vollständiger Name:</b> major histocompatibility complex, class I, A	<b>Anregungs-/Emissionsmaxima- Wellenlängen:</b> 557 nm / 570nm
<b>Isotyp:</b> IgG	<b>Berechnete Masse:</b> 41 kDa	
<b>Immunogen Katalognummer:</b> AG7370	<b>Beobachtete Masse:</b> 44 kDa	

## Anwendungen

<b>Geprüfte Anwendungen:</b> FC, IF	<b>Positivkontrollen:</b> IF : HepG2-Zellen,
<b>Getestete Reaktivität:</b> Human	

## Hintergrundinformationen

Human major histocompatibility complex (MHC) antigens, also referred to as human leukocyte antigens (HLA), are encoded by genes located on the short arm of chromosome 6 (6p21.3). There are two classes of HLA antigens: class I (HLA-A, B and C) and class II (HLA-D). This class I molecules are polymorphic membrane glycoproteins composed of a heavy (alpha) chain (44 kDa) which is encoded by a HLA class I gene (HLA-A, B or C), and  $\beta$ 2-microglobulin light (beta) chain (12 kDa). They are involved in the presentation of foreign antigens to the immune system. (PMID: 667938; 3375250)

## Lagerung

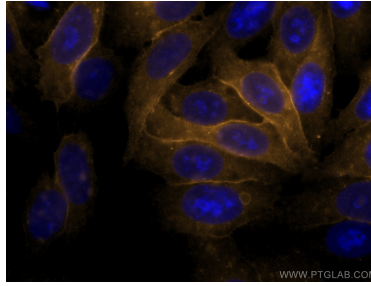
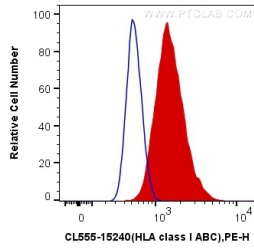
**Lagerungsbedingungen:**  
Bei -20°C lagern. Vor Licht schützen.  
**Lagerungspuffer:**  
BS mit 50% Glycerin, 0,05% Proclin300, 0,5% BSA, pH 7,3.  
**Aliquotieren ist nicht notwendig bei -20°C Lagerung**

**\*\*\* 20ul-Größen enthalten 0.1% BSA**

For technical support and original validation data for this product please contact:  
T: 1 (888) 4PTGLAB (1-888-478-4522) (toll free in USA), or 1(312) 455-8498 (outside USA)  
E: proteintech@ptglab.com  
W: ptglab.com

This product is exclusively available under Proteintech Group brand and is not available to purchase from any other manufacturer.

## Ausgewählte Validierungsdaten



1X10<sup>6</sup> HepG2 cells were surface stained with 0.4 ug CoraLite@555 Anti-Human HLA class I ABC (CL555-15240) (red), or 0.4 ug Control Antibody. Cells were not fixed.

Immunofluorescent analysis of (-20°C Methanol) fixed HepG2 cells using CoraLite@555 HLA class I ABC antibody (CL555-15240) at dilution of 1:200.