

Nur für Forschungszwecke

ACLY Polyklonaler Antikörper

Katalog-Nr.:CL555-15421

Vorgestelltes Produkt



Allgemeine Informationen

Katalog-Nr.: CL555-15421	GenBank-Zugangsnummer: BC006195	Reinigungsmethode: Antigen-Affinitätsreinigung
Größe: 100ul , Konzentration: 1 mg/mL von Nanodrop;	GeneID (NCBI): 47	Anregungs-/Emissionsmaxima- Wellenlängen: 554 nm / 570 nm
Wirt: Kaninchen	Vollständiger Name: ATP citrate lyase	
Isotyp: IgG	Berechnete Masse: 121 kDa	
Immunogen Katalognummer: AG7709	Beobachtete Masse: 120 kDa	

Anwendungen

Geprüfte Anwendungen:
FC (Intra)

Getestete Reaktivität:
Human, Maus, Ratte

Hintergrundinformationen

ACLY(ATP-citrate synthase) is also named as ACL. It is the primary enzyme responsible for the synthesis of cytosolic acetyl-CoA. ACLY serves as not only a target in oxygenated cells for suppression of lipid synthesis and histone acetylation, but also as a susceptible target in hypoxic cells to restore inhibition of glycolysis. In nonsmall cell lung carcinoma and hepatocellular carcinoma, ACLY is overexpressed compared with normal parenchyma suggesting that ACLY may represent a common target among highly malignant tumors(PMID:19795461). This protein has 2 isoforms produced by alternative splicing.

Lagerung

Lagerungsbedingungen:
Bei -20°C lagern. Vor Licht schützen. Nach dem Versand ein Jahr stabil.

Lagerungspuffer:
BS mit 50% Glycerin, 0,05% Proclin300, 0,5% BSA, pH 7,3.

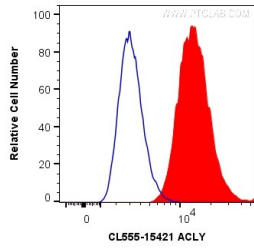
Aliquotieren ist nicht notwendig bei -20°C Lagerung

*** 20ul-Größen enthalten 0.1% BSA

For technical support and original validation data for this product please contact:
T: 1 (888) 4PTGLAB (1-888-478-4522) (toll free in USA), or 1(312) 455-8498 (outside USA)
E: proteintech@ptglab.com
W: ptglab.com

This product is exclusively available under Proteintech Group brand and is not available to purchase from any other manufacturer.

Ausgewählte Validierungsdaten



1X10⁶ A549 cells were intracellularly stained with 0.2 ug CoraLite® Plus 555 Anti-Human ACLY (CL555-15421) (red), or 0.2 ug CoraLite® Plus 555 Rabbit IgG Control Antibody (CL555-30000) (Blue). Cells were fixed with 4% PFA and permeabilized with Flow Cytometry Perm Buffer (PF00011-C).