

Nur für Forschungszwecke

PCM1 Polyklonaler Antikörper

Katalog-Nr.:CL555-19856

Vorgestelltes Produkt



Allgemeine Informationen

Katalog-Nr.: CL555-19856	GenBank-Zugangsnummer: BC000453	Reinigungsmethode: Antigen-Affinitätsreinigung
Größe: 100ul , Konzentration: 1000 µg/ml von5108 Nanodrop;	GeneID (NCBI): pericentriolar material 1	Empfohlene Verdünnungen: IF 1:200-1:800
Wirt: Kaninchen	Vollständiger Name: pericentriolar material 1	Anregungs-/Emissionsmaxima-Wellenlängen: 557 nm / 570nm
Isotyp: IgG	Berechnete Masse: 2024 aa, 228 kDa	
Immunogen Katalognummer: AG13929	Beobachtete Masse: 260-280 kDa	

Anwendungen

Geprüfte Anwendungen: FC(Intra), IF	Positivkontrollen: IF : HeLa-Zellen,
Getestete Reaktivität: Human, Maus	

Hintergrundinformationen

Pericentriolar material 1 (PCM1) is a component of centriolar satellites, which are electron dense granules scattered around centrosomes (PMID: 10579718). PCM1 is required for centrosome assembly and function. It acts as a scaffold to target several proteins to the centrosome in a dynein motor-dependent manner and regulate microtubular dynamics (PMID:18762586; 12403812). It is also involved in the biogenesis of cilia (PMID: 18772192). Chromosomal aberrations involving PCM1 gene are associated with papillary thyroid carcinomas and a variety of hematological malignancies, including atypical chronic myeloid leukemia and T-cell lymphoma. (PMID: 10980597; 16091753; 15805263; 16424865).

Lagerung

Lagerungsbedingungen:
Bei -20°C lagern. Vor Licht schützen. Nach dem Versand ein Jahr stabil.
Lagerungspuffer:
BS mit 50% Glycerin, 0,05% Proclin300, 0,5% BSA, pH 7,3.
Aliquotieren ist nicht notwendig bei -20°C Lagerung

*** 20ul-Größen enthalten 0.1% BSA

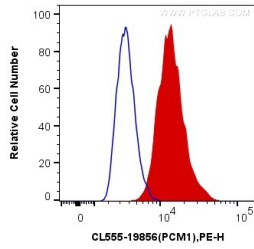
For technical support and original validation data for this product please contact:

T: 1 (888) 4PTGLAB (1-888-478-4522) (toll free in USA), or 1(312) 455-8498 (outside USA)

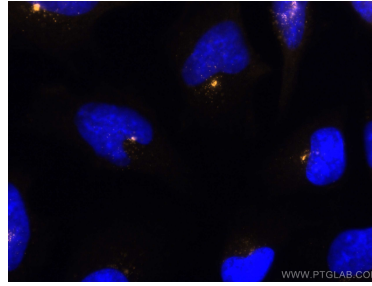
E: proteintech@ptglab.com
W: ptglab.com

This product is exclusively available under Proteintech Group brand and is not available to purchase from any other manufacturer.

Ausgewählte Validierungsdaten



1X10⁶ HepG2 cells were intracellularly stained with 0.4 ug CoraLite®555 Anti-Human PCM1 (CL555-19856) (red), or 0.4 ug Control Antibody. Cells were fixed with 4% PFA and permeabilized with Flow Cytometry Perm Buffer (PF00011-C).



Immunofluorescent analysis of (-20°C Ethanol) fixed HeLa cells using CoraLite®555 PCM1 antibody (CL555-19856) at dilution of 1:400.