

Nur für Forschungszwecke

Rabbit IgG control Polyklonaler Antikörper

Katalog-Nr.: CL555-30000



Allgemeine Informationen

| | | |
|---|--|--|
| Katalog-Nr.: CL555-30000 | GenBank-Zugangsnummer: GeneID (NCBI): | Reinigungsmethode: N/A |
| Größe: 100ul, Konzentration: 1000 µg/ml von Nanodrop; | Vollständiger Name: | Anregungs-/Emissionsmaxima- Wellenlängen: 557 nm / 570nm |
| Wirt: Kaninchen | | |
| Isotyp: IgG | | |

Anwendungen

Geprüfte Anwendungen:
FC

Getestete Reaktivität:

Hintergrundinformationen

This product is Normal rabbit IgG (without immunized) which purified with Protein A. Normal Rabbit IgG is an isotype control antibody, which is used to estimate the non-specific binding of target primary antibodies due to Fc receptor binding or other protein-protein interactions. An isotype control antibody should have the same immunoglobulin type and be used at the same concentration as the test antibody.

Lagerung

Lagerungsbedingungen:
Bei -20°C lagern. Vor Licht schützen. Nach dem Versand ein Jahr stabil.
Lagerungspuffer:
BS mit 50% Glycerin, 0,05% Proclin300, 0,5% BSA, pH 7,3.
Aliquotieren ist nicht notwendig bei -20°C Lagerung

*** 20ul-Größen enthalten 0.1% BSA

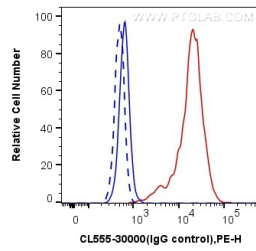
For technical support and original validation data for this product please contact:

T: 1 (888) 4PTGLAB (1-888-478-4522) (toll free
in USA), or 1(312) 455-8498 (outside USA)

E: proteintech@ptglab.com
W: ptglab.com

This product is exclusively available under Proteintech Group brand and is not available to purchase from any other manufacturer.

Ausgewählte Validierungsdaten



1X10⁶ PC-3 cells untreated (dashed lines) or treated with Calyculin A (red) were intracellularly stained with 0.13 ug CoraLite®555 Anti-Phospho-STK11/LKB1 (Thr189) Rabbit Recombinant antibody (CL555-80127), or 0.13 ug CoraLite®555 Rabbit IgG control (CL555-30000) (blue). Cells were fixed with 4% PFA and permeabilized with 90% MeOH.