

Nur für Forschungszwecke

# B23/NPM1 Monoklonaler Antikörper



Katalog-Nr.:CL555-60096

Vorgestelltes Produkt

## Allgemeine Informationen

<b>Katalog-Nr.:</b> CL555-60096	<b>GenBank-Zugangsnummer:</b> BC002398	<b>Reinigungsmethode:</b> Protein-G-Reinigung
<b>Größe:</b> 100ul , Konzentration: 1000 µg/ml von4869 Nanodrop;	<b>GeneID (NCBI):</b> 4F12A3	<b>CloneNo.:</b> 4F12A3
<b>Wirt:</b> Maus	<b>Vollständiger Name:</b> nucleophosmin (nucleolar phosphoprotein B23, numatrin)	<b>Empfohlene Verdünnungen:</b> IF 1:500-1:2000
<b>Isotyp:</b> IgG1	<b>Berechnete Masse:</b> 33 kDa	<b>Anregungs-/Emissionsmaxima- Wellenlängen:</b> 557 nm / 570nm
<b>Immunogen Katalognummer:</b> AG7415	<b>Beobachtete Masse:</b> 35-38 kDa	

## Anwendungen

<b>Geprüfte Anwendungen:</b> FC (Intra), IF	<b>Positivkontrollen:</b> IF : HepG2-Zellen,
<b>Getestete Reaktivität:</b> Human, Maus, Ratte	

## Hintergrundinformationen

Nucleophosmin (NPM1,B23) is a putative ribosome assembly factor with a high affinity for peptides containing nuclear localization signals (NLSs). The transport of proteins across the nuclear envelope is a selective, multistep process involving several cytoplasmic factors. Proteins must be recognized as import substrates, dock at the nuclear pore complex and translocate across the nuclear envelope in an ATP-dependent fashion. Several cytosolic and nuclear proteins that are central to this process have been identified. The 38 kDa nuclear protein nucleophosmin is involved in ribosomal assembly and rRNA transport. It is an abundant protein that is highly phosphorylated by Cdc2 kinase during mitosis.

## Lagerung

**Lagerungsbedingungen:**  
Bei -20°C lagern. Vor Licht schützen.  
**Lagerungspuffer:**  
BS mit 50% Glycerin, 0,05% Proclin300, 0,5% BSA, pH 7,3.  
Aliquotieren ist nicht notwendig bei -20°C Lagerung

\*\*\* 20ul-Größen enthalten 0.1% BSA

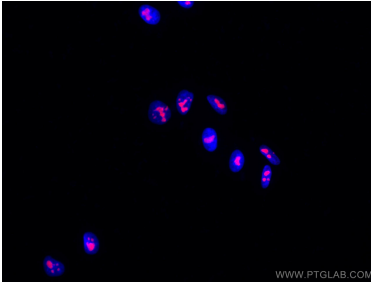
For technical support and original validation data for this product please contact:

T: 1 (888) 4PTGLAB (1-888-478-4522) (toll free  
in USA), or 1(312) 455-8498 (outside USA)

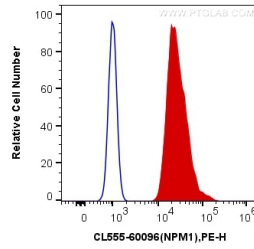
E: [proteintech@ptglab.com](mailto:proteintech@ptglab.com)  
W: [ptglab.com](http://ptglab.com)

This product is exclusively available under Proteintech Group brand and is not available to purchase from any other manufacturer.

## Ausgewählte Validierungsdaten



Immunofluorescent analysis of (4% PFA) fixed HepG2 cells using CoraLite@555 B23/NPM1 antibody (CL555-60096, Clone: 4F12A3) at dilution of 1:1000. DAPI (blue).



$1 \times 10^6$  HeLa cells were intracellularly stained with 0.25  $\mu$ g CoraLite@555 Anti-Human B23/NPM1 (CL555-60096, Clone:4F12A3) (red), or 0.25  $\mu$ g Control Antibody. Cells were fixed and permeabilized with Transcription Factor Staining Buffer Kit (PF00011).