

Nur für Forschungszwecke

# Chromogranin A Monoklonaler Antikörper



Katalog-Nr.:CL555-60135

## Allgemeine Informationen

<b>Katalog-Nr.:</b> CL555-60135	<b>GenBank-Zugangsnummer:</b> BC006459	<b>Reinigungsmethode:</b> Protein-G-Reinigung
<b>Größe:</b> 100ul , Konzentration: 1000 µg/ml von1113 Nanodrop;	<b>GeneID (NCBI):</b> von1113	<b>CloneNo.:</b> 3H11C11
<b>Wirt:</b> Maus	<b>Vollständiger Name:</b> chromogranin A (parathyroid secretory protein 1)	<b>Empfohlene Verdünnungen:</b> IF 1:50-1:500
<b>Isotyp:</b> IgG1	<b>Berechnete Masse:</b> 51 kDa	<b>Anregungs-/Emissionsmaxima- Wellenlängen:</b> 557 nm / 570 nm
<b>Immunogen Katalognummer:</b> AG0807		

## Anwendungen

<b>Geprüfte Anwendungen:</b> FC (Intra), IF	<b>Positivkontrollen:</b> IF : PC-12-Zellen,
<b>Getestete Reaktivität:</b> Hausschwein, Human, Maus, Ratte	

## Hintergrundinformationen

Chromogranin A is a member of the granin family of neuroendocrine secretory proteins. It is located in secretory vesicles of neurons and endocrine cells. Chromogranin A is the precursor to several functional peptides including vasostatin, pancreastatin, catestatin and parastatin. These peptides negatively modulate the neuroendocrine function of the releasing cell (autocrine) or nearby cells (paracrine). CgA is one of the most used tumor markers in NET's (neuroendocrine tumors), and elevated CgA concentrations have been demonstrated in serum or plasma of patients with different types of these tumors.

## Lagerung

**Lagerungsbedingungen:**  
Bei -20°C lagern. Vor Licht schützen. Nach dem Versand ein Jahr stabil.  
**Lagerungspuffer:**  
BS mit 50% Glycerin, 0,05% Proclin300, 0,5% BSA, pH 7,3.  
**Aliquotieren ist nicht notwendig bei -20°C Lagerung**

**\*\*\* 20ul-Größen enthalten 0.1% BSA**

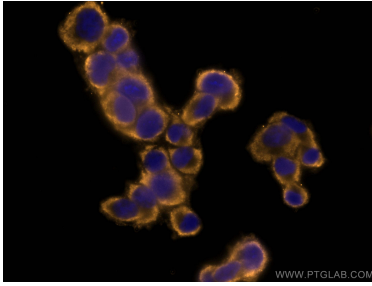
For technical support and original validation data for this product please contact:

T: 1 (888) 4PTGLAB (1-888-478-4522) (toll free  
in USA), or 1(312) 455-8498 (outside USA)

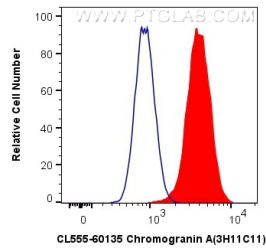
E: [proteintech@ptglab.com](mailto:proteintech@ptglab.com)  
W: [ptglab.com](http://ptglab.com)

**This product is exclusively available under Proteintech Group brand and is not available to purchase from any other manufacturer.**

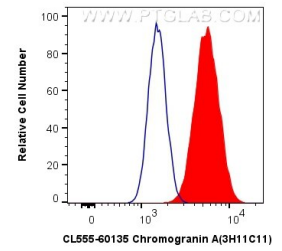
## Ausgewählte Validierungsdaten



Immunofluorescent analysis of (-20°C Ethanol) fixed PC-12 cells using CoraLite®555 Chromogranin A antibody (CL555-60135, Clone: 3H11C11) at dilution of 1:200.



1X10<sup>6</sup> SH-SY5Y cells were intracellularly stained with 0.8 ug CoraLite®555 Anti-Human Chromogranin A (CL555-60135, Clone:3H11C11) (red), or 0.8 ug Control Antibody. Cells were fixed with 4% PFA and permeabilized with Flow Cytometry Perm Buffer (PF00011-C).



1X10<sup>6</sup> Neuro-2a cells were intracellularly stained with 0.8 ug CoraLite®555 Anti-Human Chromogranin A (CL555-60135, Clone:3H11C11) (red), or 0.8 ug Control Antibody. Cells were fixed with 4% PFA and permeabilized with Flow Cytometry Perm Buffer (PF00011-C).