

Nur für Forschungszwecke

CD45 Monoklonaler Antikörper

Katalog-Nr.:CL555-60287



Allgemeine Informationen

Katalog-Nr.: CL555-60287	GenBank-Zugangsnummer: BC014239	Reinigungsmethode: Protein-A-Reinigung
Größe: 100ul , Konzentration: 1000 µg/ml von5788 Nanodrop;	GeneID (NCBI): 5788	CloneNo.: 4E9B2
Wirt: Maus	Vollständiger Name: protein tyrosine phosphatase, receptor type, C	Empfohlene Verdünnungen: IF 1:50-1:500
Isotyp: IgG2a	Berechnete Masse: 1304 aa, 147 kDa	Anregungs-/Emissionsmaxima- Wellenlängen: 557 nm / 570nm
Immunogen Katalognummer: AG13712	Beobachtete Masse: 220 kDa	

Anwendungen

Geprüfte Anwendungen: FC (Intra), IF	Positivkontrollen: IF : Mausmilzgewebe,
Getestete Reaktivität: Hausschwein, Human, Maus, Ratte	

Hintergrundinformationen

CD45, also known as leukocyte common antigen (LCA), B220, and T200, is a 180-240 kD single chain type I membrane glycoprotein. It is a tyrosine phosphatase expressed on the plasma membrane of all hematopoietic cells, except erythrocytes and platelets. CD45 is a signaling molecule that regulates a variety of cellular processes including cell growth, differentiation, cell cycle, and oncogenic transformation. CD45 is one of the best negative selection markers for characterizing and/or isolating human mesenchymal stem cells from bone marrow and other sources. Along with the positive selection markers (such as CD29, CD44, CD90, CD105 and CD166), negative selection markers (such as CD34 and CD45) are used for MSC identification.

Lagerung

Lagerungsbedingungen:
Bei -20°C lagern. Vor Licht schützen. Nach dem Versand ein Jahr stabil.
Lagerungspuffer:
BS mit 50% Glycerin, 0,05% Proclin300, 0,5% BSA, pH 7,3.
Aliquotieren ist nicht notwendig bei -20°C Lagerung

*** 20ul-Größen enthalten 0.1% BSA

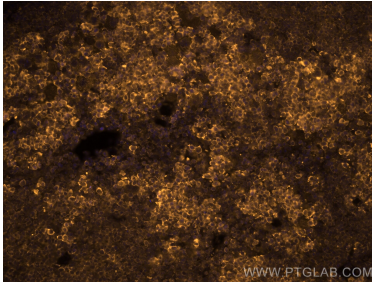
For technical support and original validation data for this product please contact:

T: 1 (888) 4PTGLAB (1-888-478-4522) (toll free
in USA), or 1(312) 455-8498 (outside USA)

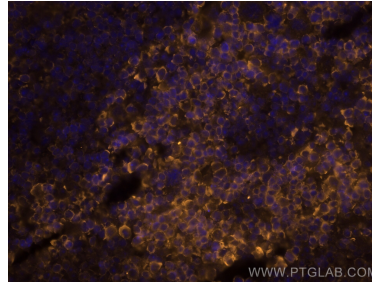
E: proteintech@ptglab.com
W: ptglab.com

This product is exclusively available under Proteintech Group brand and is not available to purchase from any other manufacturer.

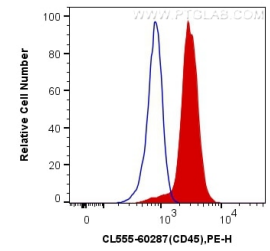
Ausgewählte Validierungsdaten



Immunofluorescent analysis of (4% PFA) fixed mouse spleen tissue using CoraLite®555 CD45 antibody (CL555-60287, Clone: 4E9B2) at dilution of 1:200.



Immunofluorescent analysis of (4% PFA) fixed mouse spleen tissue using CoraLite®555 CD45 antibody (CL555-60287, Clone: 4E9B2) at dilution of 1:200.



1X10⁶ Raji cells were intracellularly stained with 0.4 ug CoraLite®555 Anti-Human CD45 (CL555-60287, Clone:4E9B2) (red), or 0.4 ug isotype control. Cells were fixed with 4% PFA and permeabilized with Flow Cytometry Perm Buffer (PF00011-C).